

FACILITIES BEING ESTABLISHED

- CT SCAN (Trauma Center)
- UPGRADEMENT OF EMERGENCY
- ICU
- CCU
- DIALYSIS
- PHYSIOTHERAPY
- BURN UNIT
- DENTAL UNIT
- LAUNDRY
- MORTUARY
- YELLOW ROOM
- WATER FILTRATION PLANT
- CANTEEN

SERVICES TO BE OUTSOURCE

- MEP
- JANITORIAL
- PARKING & SECURITY
- CAFETERIA
- AC's & GENERATORS
- LAUNDRY
- CT SCAN
- PATHOLOGY LABS
- HORTICULTURE

THEMATIC AREAS OF MSDS

- 2.1 ACCESS, ASSESSMENT, AND C.O.N.T.I.N.U.I.T.Y OF CARE (AAC)
- CARE OF PATIENTS (COP)
- MANAGEMENT OF MEDICATION (MOM)
- PATIENT RIGHTS AND EDUCATION (PRE)
- HOSPITAL INFECTION CONTROL (HIC)
- CONTINUOUS QUALITY IMPROVEMENT (CQI)
- RESPONSIBILITIES OF MANAGEMENT (ROM)
- FACILITY MANAGEMENT AND SAFETY (FMS)
- HUMAN RESOURCE MANAGEMENT (HRM)
- INFORMATION MANAGEMENT SYSTEM (IMS)

IT INTERVENTIONS

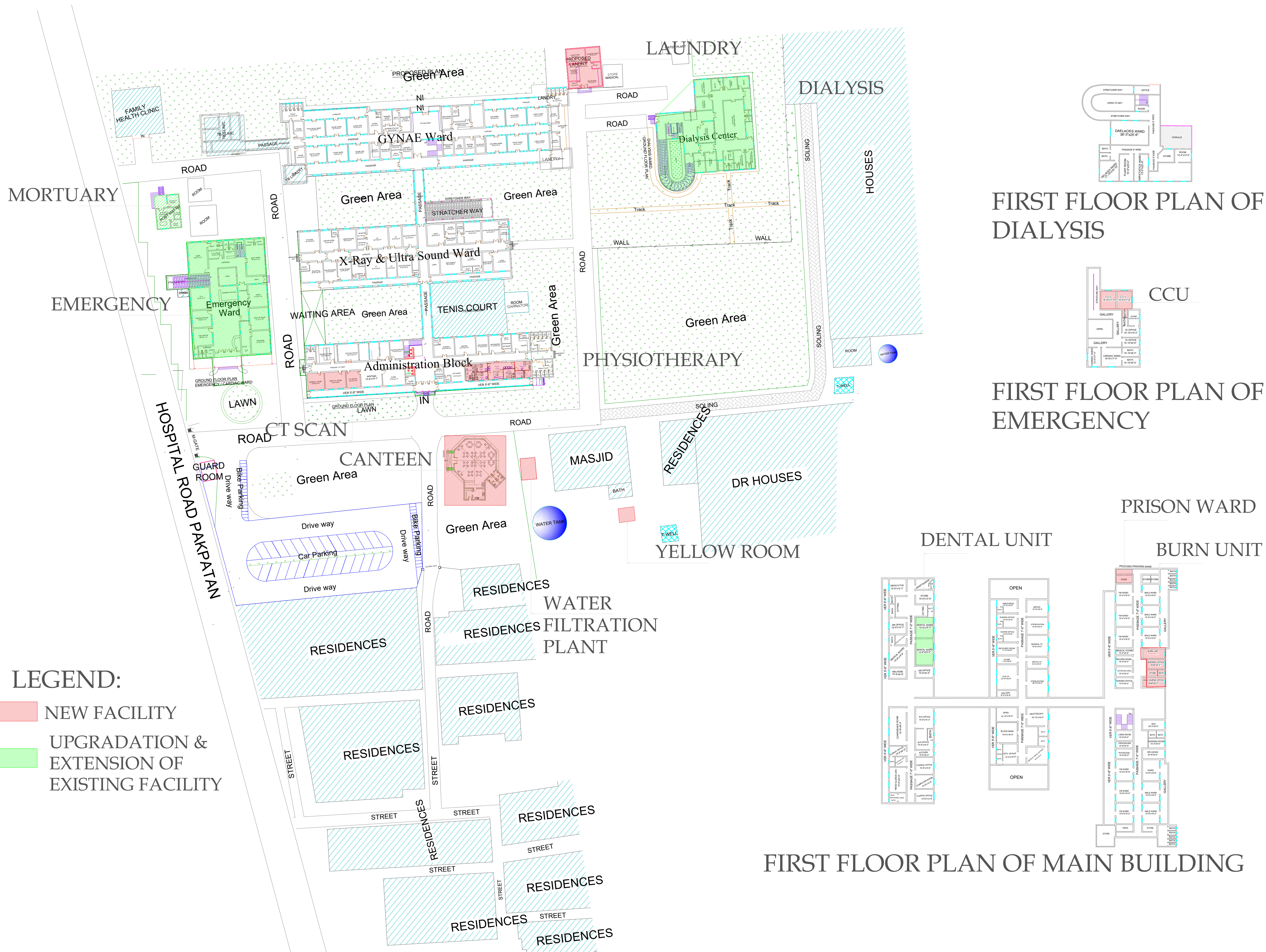
- QUEUE MANAGEMENT SYSTEM
- ELECTRONIC MEDICAL RECORD

NEW MANAGEMENT STRUCTURE

- NMS
- CONSULTANTS
- NURSES
- WMO's
- EMO's
- AHP
- PHARMACISTS
- PHYSIOTHERAPISTS



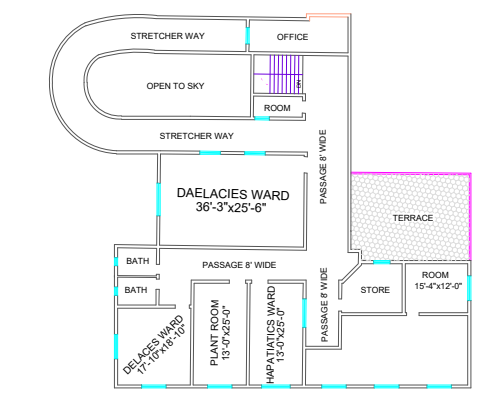
BY:
PROJECT MANAGEMENT UNIT
PRIMARY & SECONDARY
HEALTHCARE DEPARTMENT
GOVT. OF PUNJAB



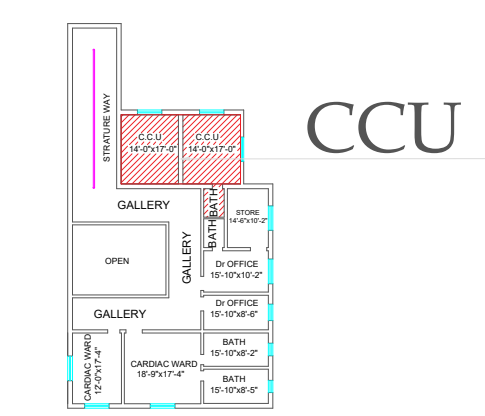
MASTER PLAN OF DHQ HOSPITAL PAKPATTAN

LEGEND:
 NEW FACILITY
 UPGRADEMENT & EXTENSION OF EXISTING FACILITY

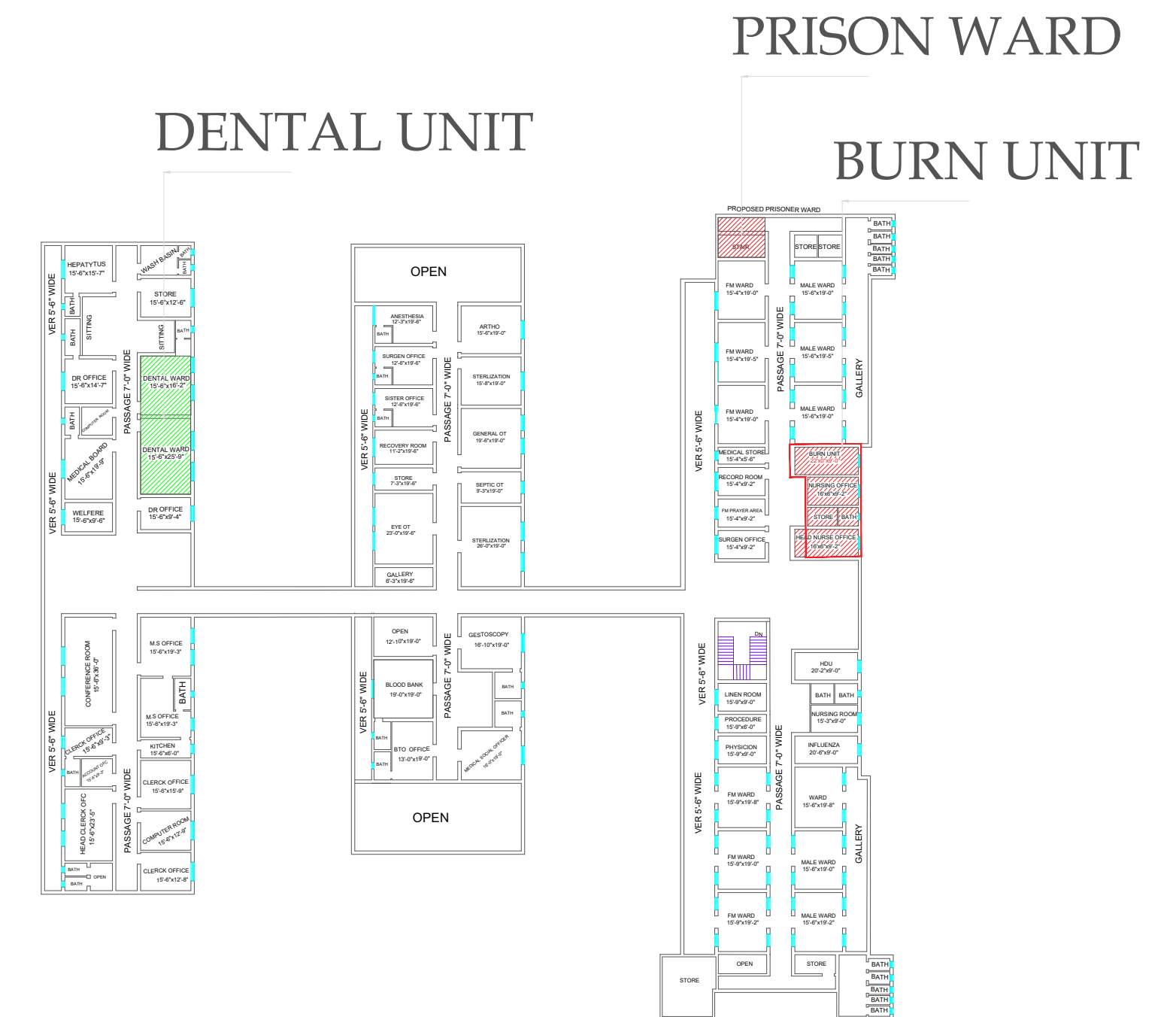
FIRST FLOOR PLAN OF DIALYSIS



FIRST FLOOR PLAN OF EMERGENCY



FIRST FLOOR PLAN OF MAIN BUILDING



MACHINERY & EQUIPMENTS

| Area | ITEM DESCRIPTION |
|-----------------------------------|---|
| Emergency Equipment | |
| Reception Area | Table Chairs Computer Data Entry With Printer Task (2) X 40 CM Chairs (2) |
| Triage area | 10 1/2 apparatus with 1000/10 Gurney WITH FOOT STEPPING Mortuary 8 P apparatus (2) Laryngoscope jaws & 200 ear (2) Doppler (2) ECG Machine with 1000/10 Center oxygen with accessories FOR each NEBULIZER (2) SUCKER MACHINE (2) CRASH TROLLEY EQUIP (2) INSTRUMENT CABINET (2) MEDICINE TROLLEY (2) O 2 TANK WITH 1000/10 Center Oxygen supply Sucker machine Portable O 2 Lights Ceiling Light Hot air oven Autoclave Instrument trolley (2) Instrument cabinet SUCKER (2) Sucker machine (2) Nebulizer (2) Center Oxygen supply (2) Resuscitation Trolley (2) Resuscitation Trolley (2) Defibrillator (2) ECG Machine (2) BP APPARATUS (2) ATTENDANT BENCH (2) (MORTUARY BEDS) with accessories with foot step (2) ECG machine with 1000/10 Pulse oximeter (2) Nebulizer (2) Nebulizer (2) Sucker machine (2) Mask (2) Stretcher (2) ambulance gurney with Mask (2) ambulance gurney with Mask (2) ambulance gurney with Mask (2) Portable x-ray (200 M.A) Portable x-ray (200 M.A) Portable x-ray (200 M.A) Shoe Cover Machine Ven Printer Acoustic Ceiling Board |
| Minor O.T | |
| Constant / specialized care room | |
| Emergency ward | |
| Generalized | |
| Others | |
| Medical Equipment | |
| Laboratory | |
| X-Rays | |
| Ultrasound | |
| CCU | |
| Blood Bank | |
| Dialysis Unit (10 beds) | |
| Nursery | |
| O.T (4) | |
| Orthopedic | |
| Gynae (20 beds) | |
| Surgical Emergency (10 beds) | |
| Others | |
| Machinery and Equipment (General) | |
| Area | Name of Equipment |
| Others | Refrigerator (Domestic) front glass Refrigerator glass single door Air Curtain On Door Washing machines for parties Gas burner for parties 7 m Refrigerator (2) LED TV 4 Ton air conditioners (Cabinet) 2 Ton air conditioners (Cabinet) 2 Ton air conditioners (split) Ceiling Fans 10" Blow Fans 16" Industrial Exhaust Refrigerators 10 CFT Duct Connection of Electricity / Express Line etc. Electrical Distribution Boxes Protection cabin for electricity distribution boxes Bed Sheets and pillow covers Blankets Blankets with covers Stoves for parties CCTV Camera CCTV Camera top dome Fire extinguishers DVR |