

### FACILITIES BEING ESTABLISHED

- CT SCAN
- UPGRADATION OF EMERGENCY
- ICU
- CCU
- DIALYSIS
- PHYSIOTHERAPY
- BURN UNIT
- DENTAL UNIT
- LAUNDRY
- MORTUARY
- YELLOW ROOM
- WATER FILTRATION PLANT
- CANTEEN

### SERVICES TO BE OUTSOURCE

- MEP
- JANITORIAL
- PARKING & SECURITY
- CAFETERIA
- AC's & GENERATORS
- LAUNDRY
- CT SCAN
- PATHOLOGY LABS
- HORTICULTURE

### THEMATIC AREAS OF MSDS

- 2.1 ACCESS, ASSESSMENT, AND C.O.N.T.I.N.U.I.T.Y OF CARE (AAC)
- C.A.R.E OF PATIENTS (COP)
- M.A.N.A.G.E.M.E.N.T OF MEDICATION (MOM)
- P.A.T.I.E.N.T R.I.G.H.T.S AND EDUCATION (PRE)
- H.O.S.P.I.T.A.L I.N.F.E.C.T.I.O.N C.O.N.T.R.O.L (HIC)
- C.O.N.T.I.N.U.O.U.S Q.U.A.L.I.T.Y I.M.P.R.O.V.E.M.E.N.T (CQI)
- R.E.S.P.O.N.S.I.B.I.L.I.T.I.E.S OF M.A.N.A.G.E.M.E.N.T (ROM)
- F.A.C.I.L.I.T.Y M.A.N.A.G.E.M.E.N.T AND S.A.F.E.T.Y (FMS)
- H.U.M.A.N R.E.S.O.U.R.C.E M.A.N.A.G.E.M.E.N.T (HRM)
- I.N.F.O.R.M.A.T.I.O.N M.A.N.A.G.E.M.E.N.T S.Y.S.T.E.M (IMS)

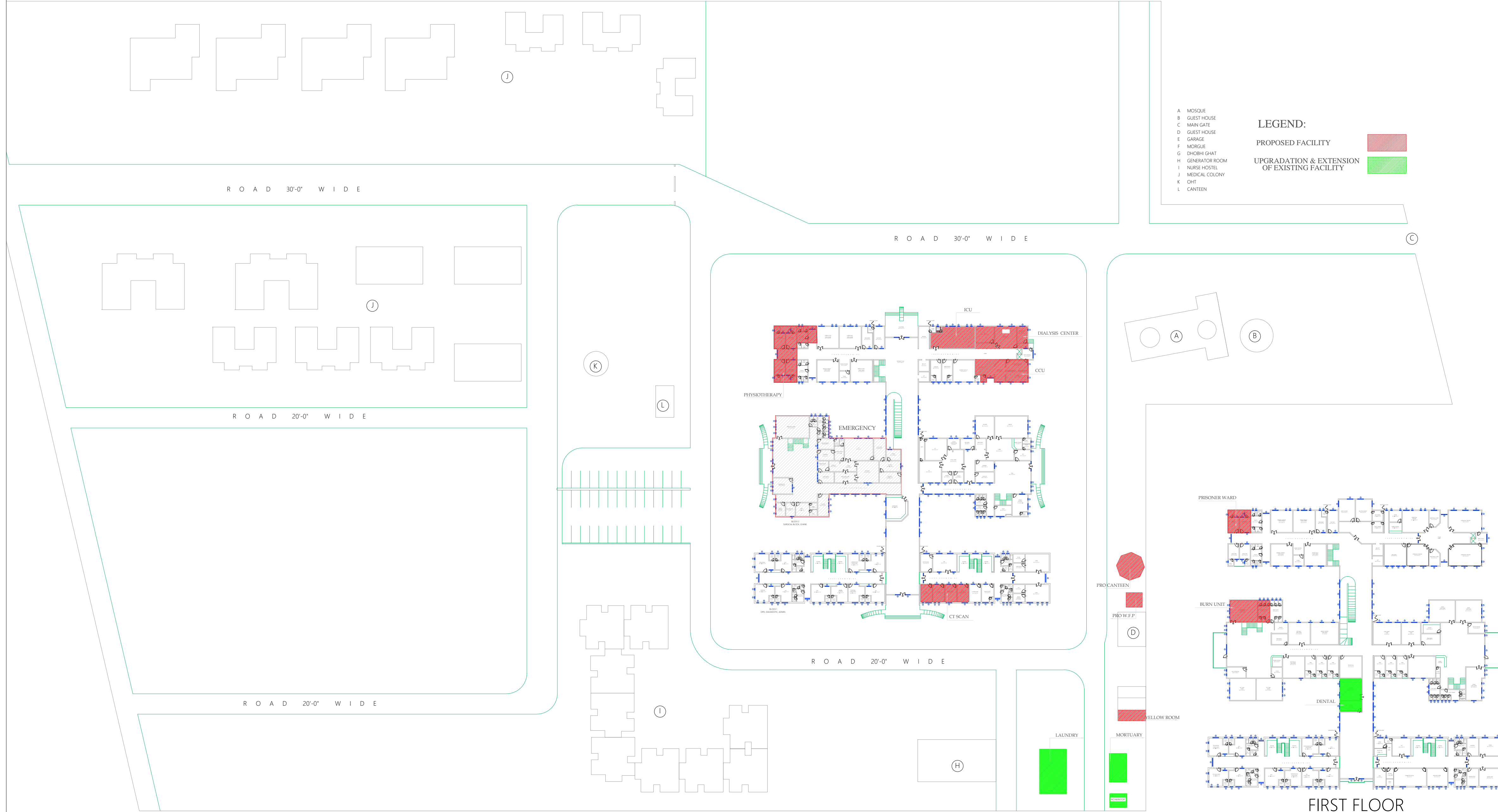
### IT INTERVENTIONS

- Q.U.E.U.E M.A.N.A.G.E.M.E.N.T S.Y.S.T.E.M
- E.L.E.C.T.R.O.N.I.C M.E.D.I.C.A.L R.E.C.O.R.D

### NEW MANAGEMENT STRUCTURE

- N.M.S
- C.O.N.S.U.L.T.A.N.T.S
- N.U.R.S.E.S
- W.M.O's
- E.M.O's
- A.H.P
- P.H.A.R.M.A.C.I.S.T.S
- P.H.Y.S.I.O.T.H.E.R.A.P.I.S.T.S

BY:  
PROJECT MANAGEMENT UNIT  
PRIMARY & SECONDARY  
HEALTHCARE DEPARTMENT  
GOVT. OF PUNJAB



**LEGEND:**

PROPOSED FACILITY [Red Box]

UPGRADATION & EXTENSION OF EXISTING FACILITY [Green Box]

- A. MOSQUE
- B. GUEST HOUSE
- C. MAIN GATE
- D. GUEST HOUSE
- E. GARAGE
- F. MOSQUE
- G. DHQ GHAT
- H. GENERATOR ROOM
- I. NURSE HOTEL
- J. MEDICAL COLONY
- K. CHIT
- L. CANTEN

FIRST FLOOR

### MACHINERY & EQUIPMENTS

Area	ITEM DESCRIPTION
Reception Area	Table Chair Computer Data Entry With Printer Table 2' X 4' 1/2"
Triage area	Chair 1/2"
	Roller table with top (1/2")
	Stump with FOOT STEPPING
	Monitor 15" approx (1/2")
	Laryngoscope passes 6&8&10 approx (1/2")
	Diagnosis set (1/2")
	ECG Machine with table (1/2")
	Central oxygen with accessories 1/2"
	NE BLU 10 1/2 HD (1/2")
	BLU 10 1/2 HD (1/2")
CRASH TROLLEY EQUIPE (1/2")	
NEUTRALMENT CABINET (1/2")	
MEDICINE TROLLEY (1/2")	
O.T table with foot step	
Center Oxygen supply	
Sucker machine	
Pomona O.Lights	
Ceiling o light	
Hot air oven	
Autoclave	
Equipment trolley (1/2")	
Instrument cabinet	
SURINE 15"	
Sucker machine (1/2")	
Neck stand (1/2")	
Center Oxygen supply (1/2")	
Resuscitation Trolley (1/2")	
Resuscitator (1/2")	
Defibrillator (1/2")	
Public commiser (1/2")	
Bedside monitor (1/2")	
ECG MACHINE (1/2")	
EP APPARATUS (1/2")	
FOOT STEPPING	
ATTENDANT BENCH (1/2")	
MEDICINE TROLLEY with accessories (with foot step) (1/2")	
ECG machine with table (1/2")	
Public commiser (1/2")	
EP apparatus wall type (1/2")	
Neck stand (1/2")	
Sucker machine (1/2")	
Wheel chair (1/2")	
Stretcher (1/2")	
Jumbo bag pads with Mast (1/2")	
ambo bag stand with Mast (1/2")	
patient stool (1/2")	
Portable X-ray (1/2")	
Portable X-ray (1/2")	
Portable X-ray (1/2")	
Other	Vein Finder Electric Drains Filter
<b>Medical Equipment</b>	
Area	Name of Equipment
Laboratory	Semi Auto Clinical Chemistry Analyser
	Hematology Analyser
	Electrolyte Analyser
	Blood Urea Analyser
	Clinical Microscope
	Water Bath
	Hot Air Oven
	Distilled water plant
	Auto pipette
	glass ware
X.Rays	Emergency Machine
	Static X-ray Machine
	Mobile X-Ray Machine
	Computer Radiography System
	Dental X-Ray Machine
	Lead apron and PPE
	Dental meter personal (ADD)
	Lead glass shield
	Lead Wall
	Phosphor Plate (Breast)
Color Doppler RADIOLOGY	
CCU	Cardiac Monitor
	Temporary pace maker
	Defibrillator
	ECG Machine Three Channel
	ET Machine
	Color Doppler RADIOLOGY
	Suction Pump
	Blood Cabinet
	Centrifuge Machine
	Slide viewer
Blood Bank	Clinical Microscope
	Computerized Hemocrits Machine
	Billy Cot
	Phototherapy Unit
	Infant Warmer
	Pulse Oximeter
	Infant Monitor
	Hospital Grade Nebulizer Heavy Duty
	Apnea/Respiratory Machine with Ventilator
	BED SIDE PATIENT MONITOR
ECU Monitor	
Defibrillator	
OT (4)	Electrocardiogram Unit
	Operation Table
	Ceiling Operating Light
	STEAM STERILIZER
	Resuscitation trolley With Crash Cart
	Emergency
	MOBILE OPERATING LIGHT
	ORTHOPEDIC DRILL
	Wheeler Cutting Pneumatics
	Pneumatic Sponges
Orthopedic Instruments	
Orthopedic	Phosphor Plate (Breast)
	Autoclave
	Emergency Set
	Delivery table
	ECU Monitor
	D.A.C. Set
	Clinical Microscope
	CCTV Machine Three Channel
	delivery table Lights
	Billy Cot
Delivery trolley	
Delivery table Heart Rate Detector	
Sham	
Operation Table	
MOBILE OPERATING LIGHT	
Suction Pump	
Surgiscope	
Set of Surgical Instruments	
Surgical Emergencies (10 beds)	Stretcher
	wheel chair
	bed support
	Resuscitation trolley With Crash Cart
	Resuscitation trolley With Crash Cart
	EP Apparatus
	Ventilator
	Crash
	X-RAY PROCESSOR
	Hand wash basin with sink 16"
Repair bench	
Central Medical Gas Pipe Line System	
Refrigerator glass single Door	
Disinfectant Machine	
CCTV Camera top dome	
Diathermy Machine	
CCTV Camera	
Shower	
DVR for CCTV Camera	
Sound System for announcements	
Fire Extinguishers	
LED Tils	
<b>Machinery and Equipment (General)</b>	
Area	Name of Equipment
Others	Refrigerator/Compressor front glass double door
	Refrigerator glass single door
	Air Curtain On Door
	Distilling machines for patients
	Gas Burner for patients
	Fire Extinguishers (CO2)
	LED TV
	4 Ton air conditioners (Cabinet)
	2 Ton air conditioners (Cabinet)
	4 Ton air conditioners (split)
Ceiling fan 16"	
Refrigerator 16 CF	
Refrigerator 16 CF	
Dual connection of electricity /	
Electric Line etc.	
Electronic Distribution boxes	
Protection cabin for electricity distribution boxes	
Bed Sheets and pillow covers	
Pillow	
Blankets with covers	
Blankets for patients	
CCTV Camera	
CCTV Camera top dome	
Fire extinguishers	
DVR	