

### FACILITIES BEING ESTABLISHED

- CT SCAN
- UPGRADATION OF EMERGENCY
- ICU
- CCU
- DIALYSIS
- PHYSIOTHERAPY
- BURN UNIT
- DENTAL UNIT
- LAUNDRY
- MORTUARY
- YELLOW ROOM
- WATER FILTRATION PLANT
- CANTEEN

### SERVICES TO BE OUTSOURCE

- MEP
- JANITORIAL
- PARKING & SECURITY
- CAFETERIA
- AC's & GENERATORS
- LAUNDRY
- CT SCAN
- PATHOLOGY LABS
- HORTICULTURE

### THEMATIC AREAS OF MSDS

- 2.1 ACCESS, ASSESSMENT, AND C.ONTINUITY OF CARE (AAC)
- CARE OF PATIENTS (COP)
- MANAGEMENT OF MEDICATION (MOM)
- PATIENT RIGHTS AND EDUCATION (PRE)
- HOSPITAL INFECTION CONTROL (HIC)
- CONTINUOUS QUALITY IMPROVEMENT (CQI)
- RESPONSIBILITIES OF MANAGEMENT (ROM)
- FACILITY MANAGEMENT AND SAFETY (FMS)
- HUMAN RESOURCE MANAGEMENT (HRM)
- INFORMATION MANAGEMENT SYSTEM (IMS)

### IT INTERVENTIONS

- QUEUE MANAGEMENT SYSTEM
- ELECTRONIC MEDICAL RECORD

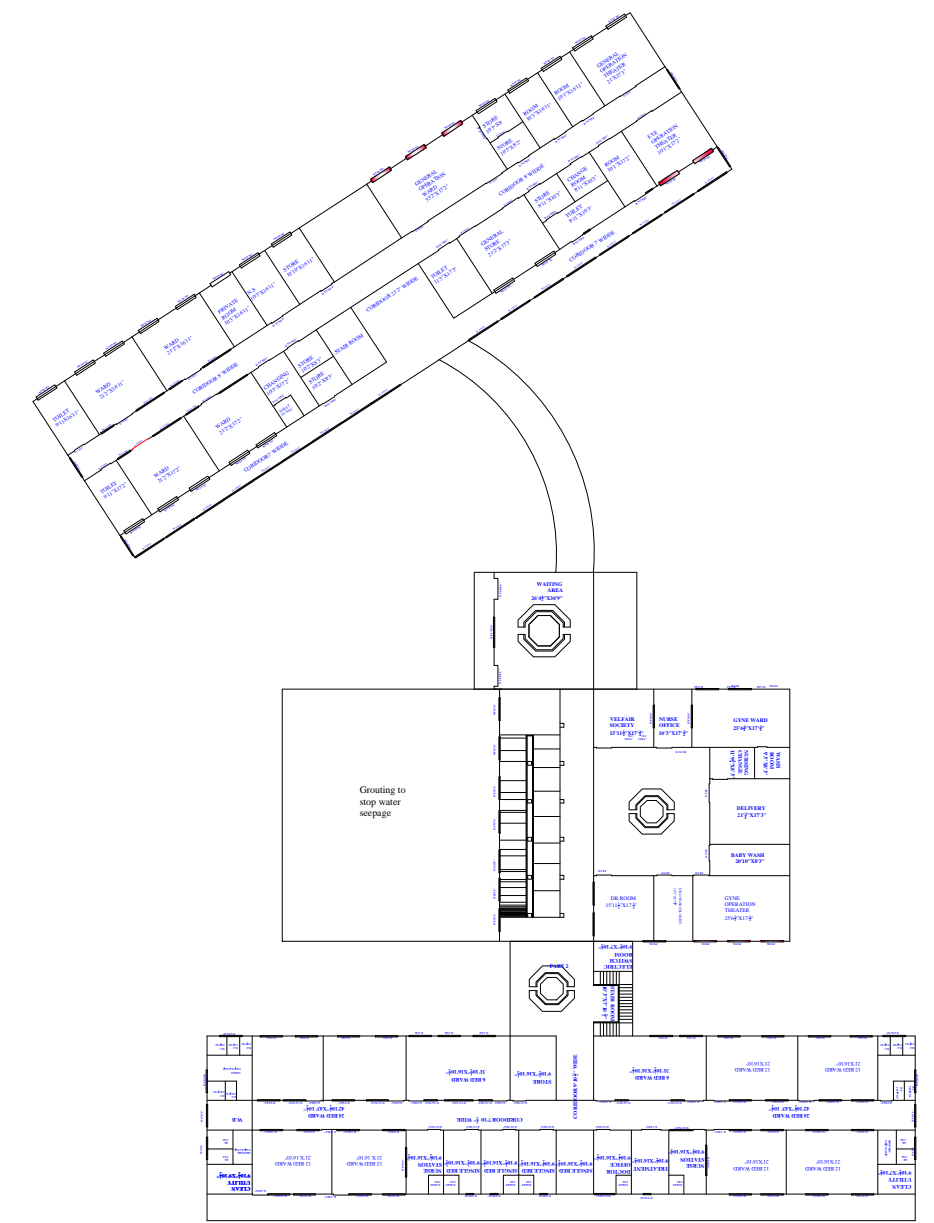
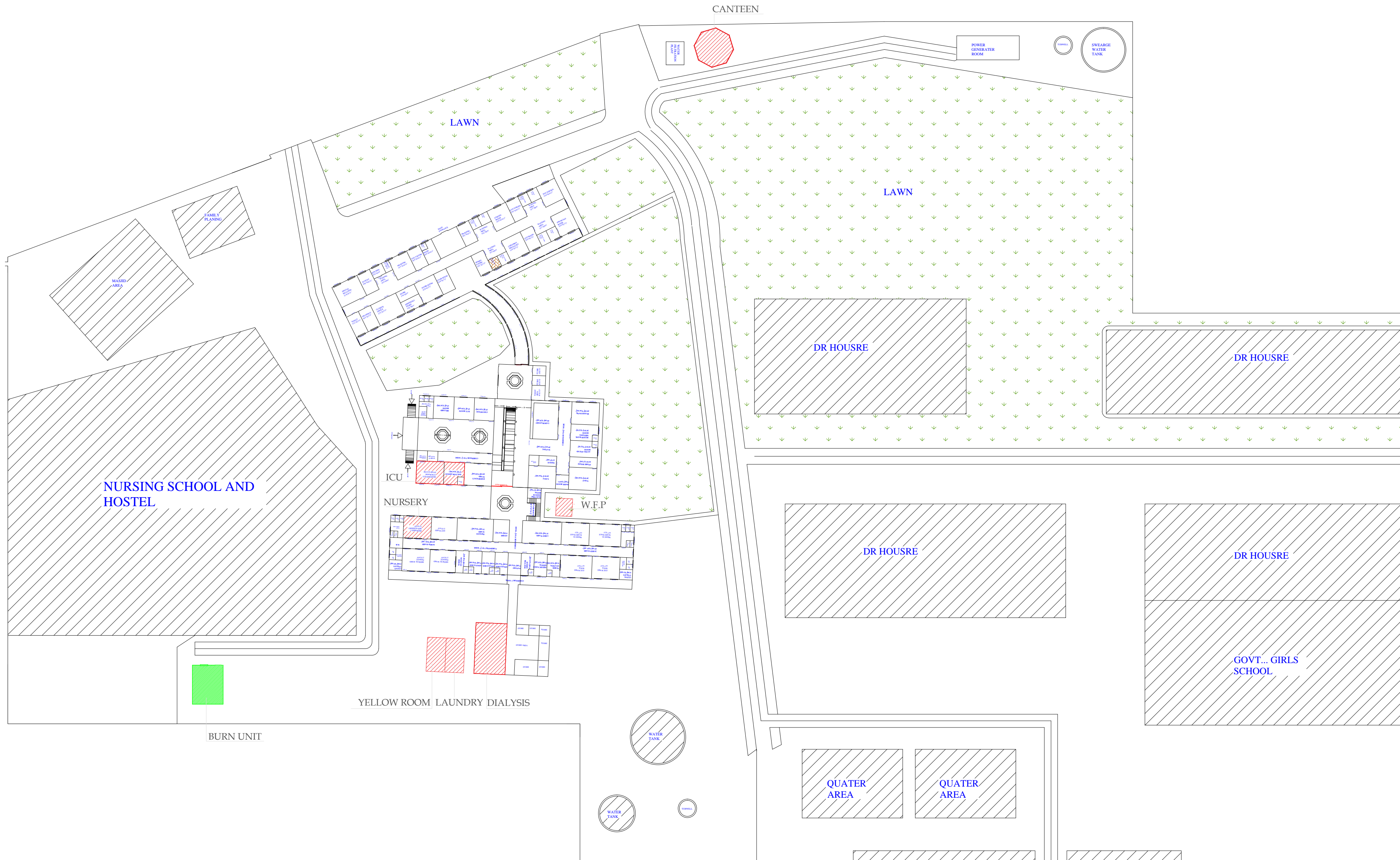
### NEW MANAGEMENT STRUCTURE

- NMS
- CONSULTANTS
- NURSES
- WMO's
- EMO's
- AHP
- PHARMACISTS
- PHYSIOTHERAPISTS



BY:  
PROJECT MANAGEMENT UNIT  
PRIMARY & SECONDARY  
HEALTHCARE DEPARTMENT  
GOVT. OF PUNJAB

# MASTER PLAN OF THQ HOSPITAL GOJRA



FIRST FLOOR PLAN

### MACHINERY & EQUIPMENTS

| Area  | ITEM DESCRIPTION                              |                       |
|---|---|-----------------------|
| Emergency Equipment                                 | Ice   |                       |
|   | Computer Data Entry With Printer              |                       |
|   | Table 2.5 x 4.5' (N)                          |                       |
|   | Chair (N)                                     |                       |
|   | 8 x 8 aluminum wall type (N)                  |                       |
|   | Gurney WITH FOOT & TIE (N)                    |                       |
|   | Security B.P. apparatus (N)                   |                       |
|   | Laryngoscope pads Adult (N)                   |                       |
|   | Diagnosis set (N)                             |                       |
|   | CCU Machine with table (N)                    |                       |
| Triage area   | Central oxygen with accessories               |                       |
|   | F.O.B. wash                                   |                       |
|   | NEBULIZER (N)                                 |                       |
|   | SUCKER MACHINE (N)                            |                       |
|   | CRASH TROLI EQUIPMENT                         |                       |
|   | INSTRUMENT CABINET (N)                        |                       |
|   | MEDICAL TROLI (N)                             |                       |
|   | O.T table WITH foot stop                      |                       |
|   | Center Oxygen supply                          |                       |
|   | Sucker machine                                |                       |
| Minor O.T   | Portable O.T Lights                           |                       |
|   | Canopy light                                  |                       |
|   | Hot air oven                                  |                       |
|   | Autoclave                                     |                       |
|   | Instrument trolley (N)                        |                       |
|   | Instrument cabinet                            |                       |
|   | GURNEY (N)                                    |                       |
|   | Sucker machine (N)                            |                       |
|   | Nebulizer (N)                                 |                       |
|   | Center Oxygen supply (N)                      |                       |
| Constant / specialized care room                    | Resuscitation trolley (N)                     |                       |
|   | Emergency (N)                                 |                       |
|   | Defibrillator (N)                             |                       |
|   | Pulse-oximeter (N)                            |                       |
|   | Respirator (N)                                |                       |
|   | ECG MACHINE (N)                               |                       |
|   | BP APPARATUS (N)                              |                       |
|   | FOOT STEP (N)                                 |                       |
|   | ATTENDANT BED (N)                             |                       |
|   | WITCHES with accessories (with foot stop) (N) |                       |
| ECG machine with table (N)                          |   |                       |
| Emergency ward                                      | Pulse-oximeter (N)                            |                       |
|   | Respirator (N)                                |                       |
|   | B.P. apparatus wall type (N)                  |                       |
|   | Nebulizer (N)                                 |                       |
|   | Sucker machine (N)                            |                       |
|   | Wheel chair (N)                               |                       |
|   | Stretcher (N)                                 |                       |
|   | ambu bag pads with Mask (N)                   |                       |
|   | ambulance (N)                                 |                       |
|   | patient stool (N)                             |                       |
| Generalized   | Portable x-ray (300 M.A.)                     |                       |
|   | Portable ultra sound                          |                       |
|   | Shoe Care Machine                             |                       |
|   | Vein Finder                                   |                       |
|   | Acrylic Display Board                         |                       |
|   | Others  | Acrylic Display Board |
|   |   | Acrylic Display Board |
|   |   | Acrylic Display Board |
|   |   | Acrylic Display Board |
|   |   | Acrylic Display Board |
| Acrylic Display Board                               |   |                       |
| Acrylic Display Board                               |   |                       |
| Acrylic Display Board                               |   |                       |
| Acrylic Display Board                               |   |                       |
| Acrylic Display Board                               |   |                       |
| Medical Equipment                                   | Name of Equipment                             |                       |
|   | Sem Auto Clinical Chemistry Analyzer          |                       |
|   | Hematology Analyzer                           |                       |
|   | Electrolyte Analyzer                          |                       |
|   | Blood Gas Analyzer                            |                       |
|   | Clinical Microscope                           |                       |
|   | Wave bath                                     |                       |
|   | Hot air Oven                                  |                       |
|   | Coldster water pump                           |                       |
|   | Autoclaves                                    |                       |
| glasses   |   |                       |
| Centrifuge Machine                                  |   |                       |
| Static X-ray Machine                                |   |                       |
| Mobile X-ray Machine                                |   |                       |
| Computerized Radiography System                     |   |                       |
| Dark x-ray  |   |                       |
| Lead apron and PPE                                  |   |                       |
| General radiopacifier (A&S)                         |   |                       |
| Lead glass shield                                   |   |                       |
| Lead film   |   |                       |
| Ultrasound  | Portable/Mobile Ultrasound                    |                       |
|   | Color Doppler RADOL GGY                       |                       |
|   | Cardiac Monitor                               |                       |
|   | Temporary pacemaker                           |                       |
|   | Defibrillator                                 |                       |
|   | ECG Machine Three Channel                     |                       |
|   | E.T. Machine                                  |                       |
|   | Color Doppler CARDIOLOGY                      |                       |
|   | Blood Pump                                    |                       |
|   | Blood Cabinet                                 |                       |
| Blood Bank  | Centrifuge Machine                            |                       |
|   | Clinical Microscope                           |                       |
|   | Computerized Hematology Analyzer              |                       |
|   | Machine                                       |                       |
|   | Baby Cot                                      |                       |
|   | Prosthetic Unit                               |                       |
|   | Hand Warmer                                   |                       |
|   | Pulse Oximeter                                |                       |
|   | Infant Incubator                              |                       |
|   | Respirator Nebulizer Heavy Duty               |                       |
| Nursery   | Anesthesia Machine with Ventilator            |                       |
|   | BED SIDE PATIENT MONITOR                      |                       |
|   | ICU Monitor                                   |                       |
|   | Defibrillator                                 |                       |
|   | Defibrillator                                 |                       |
|   | Electrosurgical Unit                          |                       |
|   | Operation Table                               |                       |
|   | Central Operating Light                       |                       |
|   | STEAM STERILIZER                              |                       |
|   | Resuscitation trolley With Crash Cart         |                       |
| mayo table  |   |                       |
| MOBILE OPERATING Light                              |   |                       |
| Operation Table                                     |   |                       |
| ORTHOPEDIC DRILL                                    |   |                       |
| Plaster Casting Pneumatic                           |   |                       |
| Pneumatic Tomographs                                |   |                       |
| Orthopedic Instruments                              |   |                       |
| Portable/Mobile Ultrasound                          |   |                       |
| Subtilizer  |   |                       |
| Delivery Set  |   |                       |
| Delivery Table                                      |   |                       |
| ICU Monitor   |   |                       |
| D & C Set   |   |                       |
| Vacuum Extractor                                    |   |                       |
| ICU Machine   |   |                       |
| ECG Machine Three Channel                           |   |                       |
| Delivery Table Lights                               |   |                       |
| Baby Cot  |   |                       |
| Delivery Trolley                                    |   |                       |
| Central Heart Rate Detector                         |   |                       |
| Steam Sterilizer                                    |   |                       |
| Operation Table                                     |   |                       |
| MOBILE OPERATING LIGHT                              |   |                       |
| Suction Pump  |   |                       |
| Laryngoscope  |   |                       |
| Set of Surgical Instruments                         |   |                       |
| Surgical Emergency (10 beds)                        | Stretcher                                     |                       |
|   | wheel chair                                   |                       |
|   | Hot spotter                                   |                       |
|   | Resuscitation trolley With Crash Cart         |                       |
|   | Resuscitation trolley With Crash Cart         |                       |
|   | BP Apparatus                                  |                       |
|   | Ventilator                                    |                       |
|   | CPAP  |                       |
|   | X-RAY PROCESSOR                               |                       |
|   | Hand wash Soap Double Bay                     |                       |
| Image Reader  |   |                       |
| Central Medical Gases Pipe Line System              |   |                       |
| Refrigerator glass single Door                      |   |                       |
| Cookery Machine                                     |   |                       |
| CCTV Camera top dome                                |   |                       |
| Washing Machines                                    |   |                       |
| CCTV Camera   |   |                       |
| Stoves  |   |                       |
| Over for CCTV Camera                                |   |                       |
| Sound System for announcements                      |   |                       |
| Fire extinguishers                                  |   |                       |
| LED TV  |   |                       |
| Machinery and Equipment (General)                   | Name of Equipment                             |                       |
|   | Refrigerator (Domestic) front glass           |                       |
|   | Refrigerator glass single door                |                       |
|   | Refrigerator glass single door                |                       |
|   | Air Curtain On Door                           |                       |
|   | Washing machines for parties                  |                       |
|   | Gas Burner for parties                        |                       |
|   | Fire Extinguishers EDCP                       |                       |
|   | LED TV  |                       |
|   | 1 Ton air conditioners (Cabinet)              |                       |
| 2 Ton air conditioners (Cabinet)                    |   |                       |
| 2 Ton air conditioners (split)                      |   |                       |
| Ceiling Fans 50"                                    |   |                       |
| Blacket Fans 18"                                    |   |                       |
| Pressure Cleaners                                   |   |                       |
| Refrigerators 18, 21"                               |   |                       |
| Cable Connectors of Electricity                     |   |                       |
| Express Line etc.                                   |   |                       |
| Electricity Distribution Boxes                      |   |                       |
| Protection cabinet for electricity distribution box |   |                       |
| Bed Sheets and pillow covers                        |   |                       |
| Pillows   |   |                       |
| Blankets with covers                                |   |                       |
| Blankets with covers                                |   |                       |
| Stoves for parties                                  |   |                       |
| CCTV Camera   |   |                       |
| CCTV Camera top dome                                |   |                       |
| Fire extinguishers                                  |   |                       |
| DVR   |   |                       |