

FACILITIES BEING ESTABLISHED

- CT SCAN
- UPGRADATION OF EMERGENCY
- ICU
- CCU
- DIALYSIS
- PHYSIOTHERAPY
- BURN UNIT
- DENTAL UNIT
- LAUNDRY
- MORTUARY
- YELLOW ROOM
- WATER FILTRATION PLANT
- CANTEEN

SERVICES TO BE OUTSOURCE

- MEP
- JANITORIAL
- PARKING & SECURITY
- CAFETERIA
- AC's & GENERATORS
- LAUNDRY
- CT SCAN
- PATHOLOGY LABS
- HORTICULTURE

THEMATIC AREAS OF MSDS

- 2.1 ACCESS, ASSESSMENT, AND C.O.N.T.I.N.U.I.T.Y OF CARE (AAC)
- CARE OF PATIENTS (COP)
- MANAGEMENT OF MEDICATION (MOM)
- PATIENT RIGHTS AND EDUCATION (PRE)
- HOSPITAL INFECTION CONTROL (HIC)
- CONTINUOUS QUALITY IMPROVEMENT (CQI)
- RESPONSIBILITIES OF MANAGEMENT (ROM)
- FACILITY MANAGEMENT AND SAFETY (FMS)
- HUMAN RESOURCE MANAGEMENT (HRM)
- INFORMATION MANAGEMENT SYSTEM (IMS)

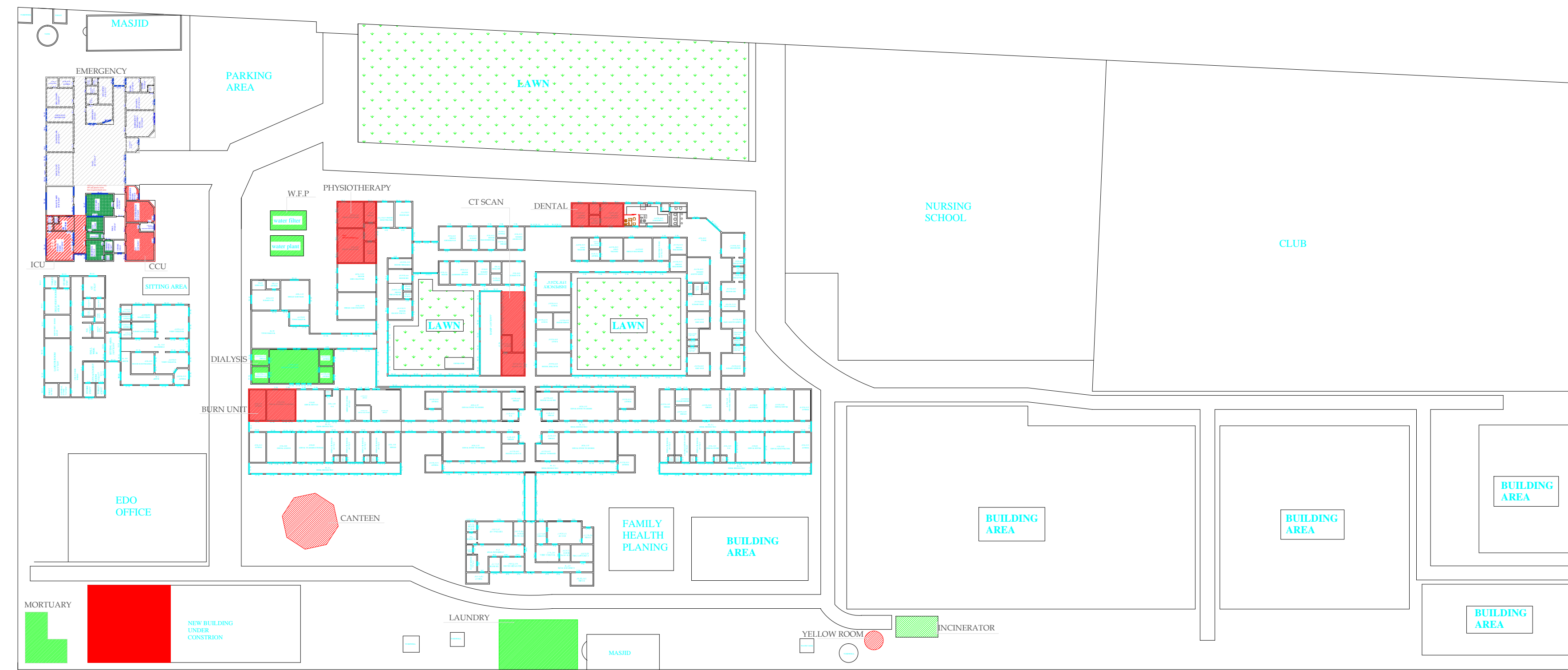
IT INTERVENTIONS

- QUEUE MANAGEMENT SYSTEM
- ELECTRONIC MEDICAL RECORD

NEW MANAGEMENT STRUCTURE

- NMS
- CONSULTANTS
- NURSES
- WMO's
- EMO's
- AHP
- PHARMACISTS
- PHYSIOTHERAPISTS

BY:
PROJECT MANAGEMENT UNIT
PRIMARY & SECONDARY
HEALTHCARE DEPARTMENT
GOVT. OF PUNJAB

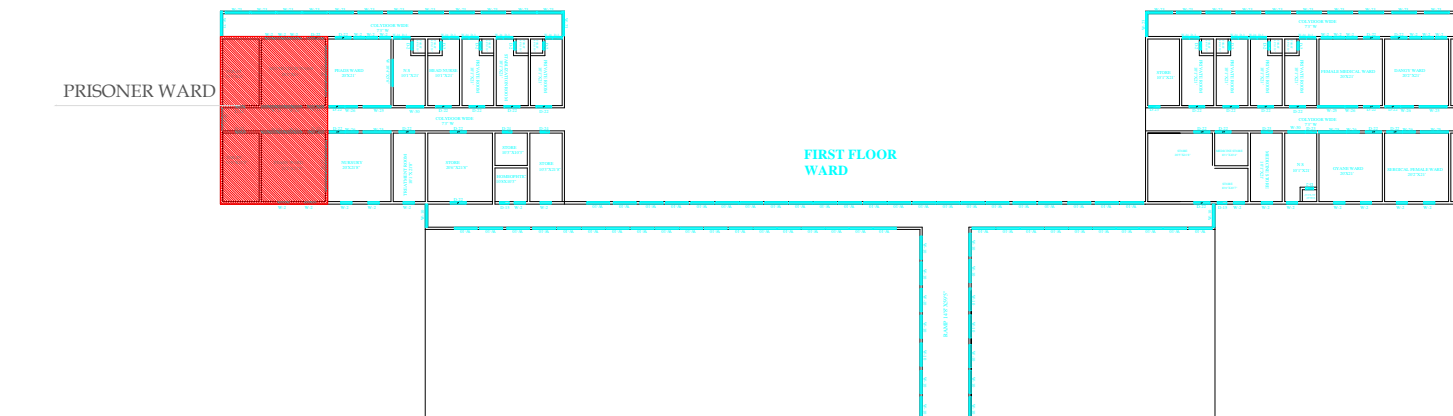


MASTER PLAN OF RAJJAN PUR



BLOW UP PLAN

FIRST FLOOR PLAN



LEGEND:

- PROPOSED FACILITY (Red box)
- UPGRADATION & EXTENSION OF EXISTING FACILITY (Green box)

MACHINERY & EQUIPMENTS

Area	ITEM DESCRIPTION	
Emergency	Table	
	Computer Data Entry With Printer	
	Table 2 x 4 FT	
	Chair 10	
	IP A apparatus wall type 100	
	Stump with FOOT STEPPING	
	Monitor 8 1/2 apparatus 100	
	Laryngoscope passes 6000	
	ear 10	
	Diagnosis set 100	
Triage area	ECG Machine with tracing 100	
	Central oxygen with accessories	
	FOR each	
	NE BLU 20 8 HD 100	
	BLU 20 8 HD 100	
	CRASH TROLLEY EQUIP 100	
	RE TREATMENT CABINET 100	
	MEDICINE TROLLEY	
	O T table with foot step	
	Center Oxygen supply	
Minor O.T	Sucker machine	
	Pomona O 1 Light	
	Ceiling o 1 light	
	Hot air oven	
	Autoclave	
	Instrument trolley 10	
	Instrument cabinet	
	SURINE 10	
	Sucker machine 10	
	Refrigerator 10	
Constant care room	Center Oxygen supply 10	
	Reanimation Trolley 10	
	Resuscitator 10	
	Defibrillator 10	
	Public comment 10	
	Resuscitator 10	
	ECG MACHINE 10	
	EP APPARATUS 10	
	FOOT STEPPING	
	ATTENDANT BENCH 10	
Emergency ward	ECG machine with tracing 100	
	accessories with foot steps 100	
	Public comment 100	
	Public comment 100	
	EP apparatus wall type 100	
	Refrigerator 10	
	Sucker machine 10	
	Wheel chair 10	
	Stretcher 10	
	ambo bag with mask 10	
Generalist	patient stool 10	
	Portable x-ray 100 M.A	
	Promote ultra sound	
	Flow Meter Machine	
	Vein Finder	
	ECG Display Board	
	Medical Equipment	Area
		Name of Equipment
		Room Auto Clinical Chemistry Analyser
		Hematology Analyser
Electrolyte Analyser		
Blood Urea Analyser		
Clinical Microscope		
Water Bath		
Hot and Cold		
Distilled water plant		
Auto pipette		
glass vials		
Centrifuge Machine		
Static X-ray Machine		
Mobile X-Ray Machine		
Computer Radiography System		
Dental X-Ray		
Lead apron and PPE		
Dental meter personal (ADD)		
Lead glass shield		
Lead Walls		
Ultrasound	Phonocardiograph 10	
	Color Doppler RADIOLOGY	
	Cardiac Monitor	
	Temporary pacemaker	
	Defibrillator	
	ECG Machine Three Channel	
	ECG Machine	
	Color Doppler CARDIOLOGY	
	Suction Pump	
	Blood Cabinet	
Blood Bank	Centrifuge Machine	
	Slide warmer	
	Clinical Microscope	
	Computerized Hematocrit Machine	
	Dialysis Unit (10 beds)	Baby Cot
		Phototherapy Unit
		Birth warmer
		Pulse Oximeter
		Infant warmer
		Hospital Grade Nebulizer Heavy Duty
Asynchronia Machine with Ventilator		
BED SIDE PATIENT MONITOR		
ECU Monitor		
Defibrillator		
Nursery	Defibrillator	
	Electrocardiogram Unit	
	Operation Table	
	Ceiling Operating Light	
	STEAM STERILIZER	
	Resuscitation trolley with Crash Cart	
	Emergency table	
	MOBILE OPERATING LIGHT	
	Operation Table	
	Orthopedic	ORTHOPEDIC DRILL
Phaser Cutting Pneumatics		
Phonocardiograph		
Orthopedic Instruments		
Phonocardiograph		
Autoclave		
Delivery table		
ECU Monitor		
D & C Set		
Gynae (20 beds)		ECG Machine Three Channel
	delivery table Lights	
	Baby Cot	
	Delivery trolley	
	Delivery table Heart Rate Detector	
	Sham Separator	
	Operation Table	
	MOBILE OPERATING LIGHT	
	Suction Pump	
	Surgical Emergency (10 beds)	Suction Pump
Set of Surgical Instruments		
Stretcher		
wheel chair		
Rest support		
Resuscitation trolley with Crash Cart		
Resuscitation trolley with Crash Cart		
EP Apparatus		
Ventilator		
CRAP		
XRAY PROCESSOR		
Hand wash basin with 20		
Reage heater		
Central Medical Gas Pipe Line System		
Refrigerator glass single Door		
Disinfection Machine		
CC TV Camera top dome		
Diathermy Machines		
CC TV Camera		
Shower		
DVR for CCTV Camera		
Sound System for announcements		
Fire Extinguishers		
LED Tels		
Machinery and Equipment (General)	Area	
	Name of Equipment	
	Refrigerator/Compressor front glass double door	
	Refrigerator glass single door	
	Air Curtain On Door	
	Dialing machines for patients	
	Gas Burner for patients	
	Fire Extinguishers DSP	
	LED TV	
	4 Ton air conditioners (Cabinet)	
2 Ton air conditioners (Cabinet)		
2 Ton air conditioners (split)		
Ceiling fan 10		
Refrigerator 10		
Refrigerator 10		
Dual connection of electricity /		
Refrigerator 10		
Electrical Distribution boxes		
Protection cabin for electricity distribution boxes		
Bed Sheets and pillow covers		
Blankets with covers		
Blankets for patients		
CC TV Camera		
CC TV Camera top dome		
Fire extinguishers		
DVR		