

# MASTER PLAN OF THQ HOSPITAL PINDI GHEB

PART 1

PART 2

PART 3

PART 4

KACHEHRI ROAD

PINDI GHEB ATTOCK ROAD



Legends:

RESIDENTIAL AREA	
ROAD	
WALL	
POWER LINE	
OHT	
TREE	
MANHOLE	
TUBE WELL	
LIGHT POLE	
LAWNS	
EARTHEN AREAS	
ASPHALTS ROADS	
TOUGH PAVERS	
P.C.C /PLINTH PROTECTION	
BOUNDARY WALL	
TAP	
HAND PUMP	
BRICK PAVERS	
AIR CONDITIONER	
TUBE LIGHT	
FAN	
ROOF LIGHT	
BULB	

AREA	
AREA WITHIN BOUNDARY WALL	29218100.0713 SFT
AREA OF CLINICAL BLOCK	8304491.5921 SFT
PLINTH AREA OF BLOCK	5394429.9328 SFT

OPENING SCHEDULE OF DOORS AND WINDOWS					
DOORS	WIDTH	HEIGHT	WINDOWS	WIDTH	HEIGHT
D1	3'-6"	8'-3"	W1	4'-0"	5'-6"
D2	2'-6"	7'-0"	W2	5'-0"	3'-6"
D3	3'-0"	8'-3"	W3	6'-0"	5'-6"
D4	4'-0"	8'-3"	W4	3'-0"	8'-6"
D4'	4'-0"	8'-3"	W5	6'-0"	7'-6"
D5	5'-0"	8'-3"	W6	3'-0"	5'-6"
D7			W7	4'-0"	1'-6"
D8					
D9			V1	4'-0"	3'-0"

Client:



GOVERNMENT OF THE PUNJAB  
PRIMARY & SECONDARY  
HEALTHCARE DEPARTMENT

Project:

CAD MAPPING OF TEHSIL  
HEAD QUARTER HOSPITALS,  
PUNJAB

Consultant:



SKAFS CONSULTANT (Pvt.) Limited  
ENGINEERING AND ENVIRONMENT CONSULTANT

Drawing Title:

THQ PINDI GHEB  
HOSPITAL MASTER PLAN

Authorized By: SKAFS	Reviewed By Co-Team Leader	Scale: 1:500
Prepared By: CAD TEAMS	Date: FEB, 2017	
Drawing No.		SKAFS/PINDI GHEB /03



# MASTER PLAN OF THQ HOSPITAL PINDI GHEB

## PART 1



**Legends:**

RESIDENTIAL AREA	
ROAD	
WALL	
POWER LINE	
OHT	
TREE	
MANHOLE	
TUBE WELL	
LIGHT POLE	
LAWNS	
EARTHEN AREAS	
ASPHALTS ROADS	
TOUGH PAVERS	
P.C.C /PLINTH PROTECTION	
BOUNDARY WALL	
TAP	
HAND PUMP	
BRICK PAVERS	
AIR CONDITIONER	
TUBE LIGHT	
FAN	
ROOF LIGHT	
BULB	

AREA	
AREA WITHIN BOUNDARY WALL	29218100.0713 SFT
AREA OF CLINICAL BLOCK	8304491.5921 SFT
PLINTH AREA OF BLOCK	5394429.9328 SFT

OPENING SCHEDULE OF DOORS AND WINDOWS					
DOORS	WIDTH	HEIGHT	WINDOWS	WIDTH	HEIGHT
D1	3'-6"	8'-3"	W1	4'-0"	5'-6"
D2	2'-6"	7'-0"	W2	5'-0"	3'-6"
D3	3'-0"	8'-3"	W3	6'-0"	5'-6"
D4	4'-0"	8'-3"	W4	3'-0"	8'-6"
D4'	4'-0"	8'-3"	W5	6'-0"	7'-6"
D5	5'-0"	8'-3"	W6	3'-0"	5'-6"
D7			W7	4'-0"	1'-6"
D8					
D9			V1	4'-0"	3'-0"

Client:



GOVERNMENT OF THE PUNJAB  
PRIMARY & SECONDARY  
HEALTHCARE DEPARTMENT

Project:

CAD MAPPING OF TEHSIL  
HEAD QUARTER HOSPITALS,  
PUNJAB

Consultant:



SKAFS CONSULTANT (Pvt.) Limited  
ENGINEERING AND ENVIRONMENT CONSULTANT

Drawing Title:

THQ PINDI GHEB  
HOSPITAL MASTER PLAN  
PART 1

Authorized By: SKAFS	Reviewed By: Co-Team Leader	Scale:
Prepared By: CAD TEAMS	Date: FEB, 2017	Sheet:
Drawing No.		SKAFS/PINDI GHEB /04



# MASTER PLAN OF THQ HOSPITAL PINDI GHEB

## PART 2



**Legends:**

RESIDENTIAL AREA	
ROAD	
WALL	
POWER LINE	
OHT	
TREE	
MANHOLE	
TUBE WELL	
LIGHT POLE	
LAWNS	
EARTHEN AREAS	
ASPHALTS ROADS	
TOUGH PAVERS	
P.C.C /PLINTH PROTECTION	
BOUNDARY WALL	
TAP	
HAND PUMP	
BRICK PAVERS	
AIR CONDITIONER	
TUBE LIGHT	
FAN	
ROOF LIGHT	
BULB	

AREA	
AREA WITHIN BOUNDARY WALL	29218100.0713 SFT
AREA OF CLINICAL BLOCK	8304491.5921 SFT
PLINTH AREA OF BLOCK	5394429.9328 SFT

OPENING SCHEDULE OF DOORS AND WINDOWS					
DOORS	WIDTH	HEIGHT	WINDOWS	WIDTH	HEIGHT
D1	3'-6"	8'-3"	W1	4'-0"	5'-6"
D2	2'-6"	7'-0"	W2	5'-0"	3'-6"
D3	3'-0"	8'-3"	W3	6'-0"	5'-6"
D4	4'-0"	8'-3"	W4	3'-0"	8'-6"
D4'	4'-0"	8'-3"	W5	6'-0"	7'-6"
D5	5'-0"	8'-3"	W6	3'-0"	5'-6"
D7			W7	4'-0"	1'-6"
D8					
D9			V1	4'-0"	3'-0"

Client:



GOVERNMENT OF THE PUNJAB  
PRIMARY & SECONDARY  
HEALTHCARE DEPARTMENT

Project:

CAD MAPPING OF TEHSIL  
HEAD QUARTER HOSPITALS,  
PUNJAB

Consultant:



SKAFS CONSULTANT (Pvt.) Limited  
ENGINEERING AND ENVIRONMENT CONSULTANT

Drawing Title:

THQ PINDI GHEB  
HOSPITAL MASTER PLAN  
PART 2

Authorized By: SKAFS	Reviewed By Co-Team Leader	Scale:
Prepared By: CAD TEAMS	Date: FEB, 2017	Sheet:
Drawing No.		SKAFS/PINDI GHEB /05



# MASTER PLAN OF THQ HOSPITAL PINDI GHEB

## PART 3



**Legends:**

RESIDENTIAL AREA	
ROAD	
WALL	
POWER LINE	
OHT	
TREE	
MANHOLE	
TUBE WELL	
LIGHT POLE	
LAWNS	
EARTHEN AREAS	
ASPHALTS ROADS	
TOUGH PAVERS	
P.C.C /PLINTH PROTECTION	
BOUNDARY WALL	
TAP	
HAND PUMP	
BRICK PAVERS	
AIR CONDITIONER	
TUBE LIGHT	
FAN	
ROOF LIGHT	
BULB	

AREA	
AREA WITHIN BOUNDARY WALL	29218100.0713 SFT
AREA OF CLINICAL BLOCK	8304491.5921 SFT
PLINTH AREA OF BLOCK	5394429.9328 SFT

OPENING SCHEDULE OF DOORS AND WINDOWS					
DOORS	WIDTH	HEIGHT	WINDOWS	WIDTH	HEIGHT
D1	3'-6"	8'-3"	W1	4'-0"	5'-6"
D2	2'-6"	7'-0"	W2	5'-0"	3'-6"
D3	3'-0"	8'-3"	W3	6'-0"	5'-6"
D4	4'-0"	8'-3"	W4	3'-0"	8'-6"
D4'	4'-0"	8'-3"	W5	6'-0"	7'-6"
D5	5'-0"	8'-3"	W6	3'-0"	5'-6"
D7			W7	4'-0"	1'-6"
D8					
D9			V1	4'-0"	3'-0"

Client:

GOVERNMENT OF THE PUNJAB  
PRIMARY & SECONDARY  
HEALTHCARE DEPARTMENT

Project:

CAD MAPPING OF TEHSIL  
HEAD QUARTER HOSPITALS,  
PUNJAB

Consultant:

SKAFS CONSULTANT (Pvt.) Limited  
ENGINEERING AND ENVIRONMENT CONSULTANT

Drawing Title:

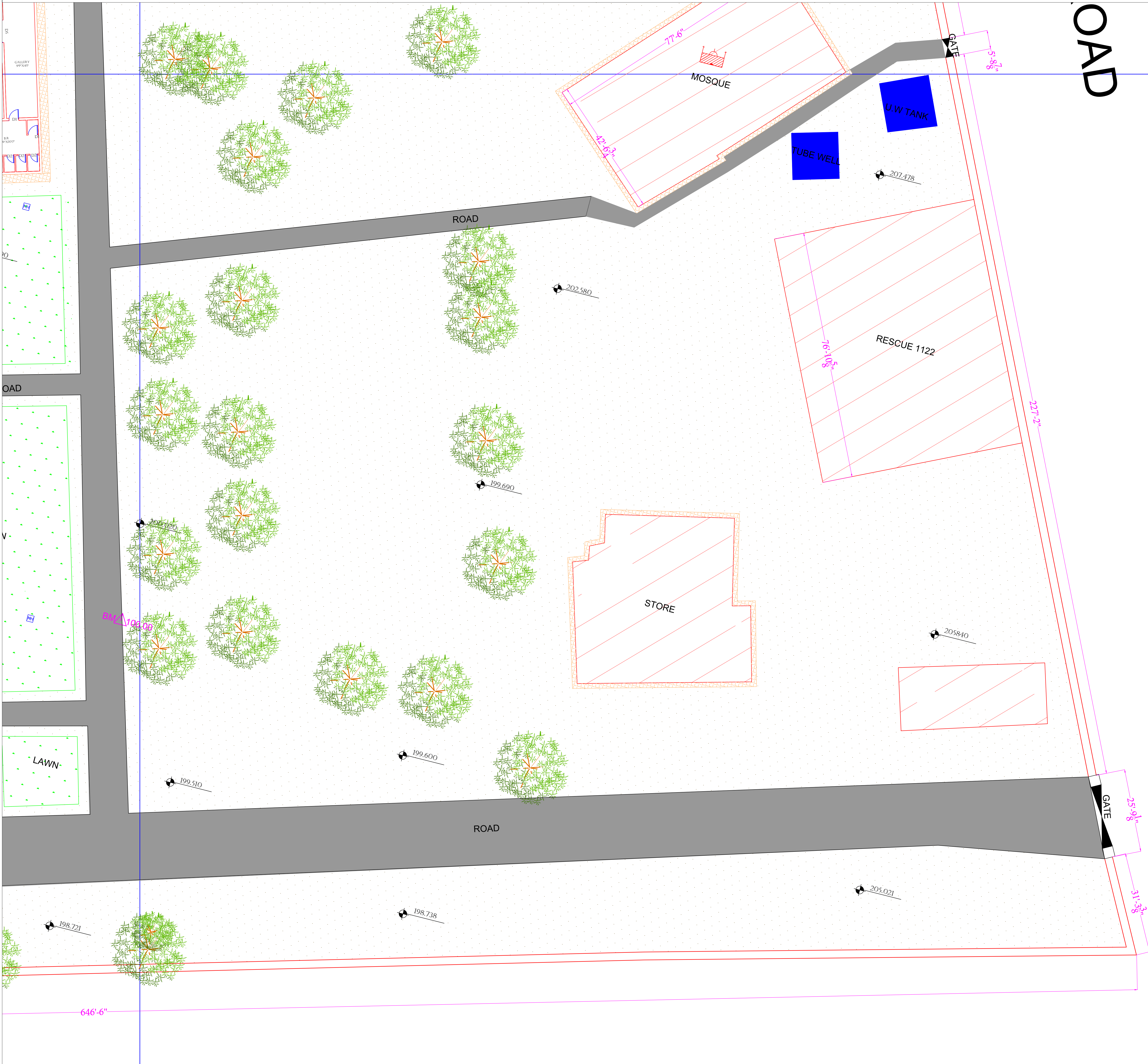
THQ PINDI GHEB  
HOSPITAL MASTER PLAN  
PART 3

Authorized By: SKAFS	Reviewed By Co-Team Leader	Scale:
Prepared By: CAD TEAMS	Date: FEB, 2017	
Drawing No.		SKAFS/PINDI GHEB /06



# MASTER PLAN OF THQ HOSPITAL PINDI GHEB

## PART 4



**Legends:**

RESIDENTIAL AREA	
ROAD	
WALL	
POWER LINE	
OHT	
TREE	
MANHOLE	
TUBE WELL	
LIGHT POLE	
LAWNS	
EARTHEN AREAS	
ASPHALTS ROADS	
TOUGH PAVERS	
P.C.C /PLINTH PROTECTION	
BOUNDARY WALL	
TAP	
HAND PUMP	
BRICK PAVERS	
AIR CONDITIONER	
TUBE LIGHT	
FAN	
ROOF LIGHT	
BULB	

AREA	
AREA WITHIN BOUNDARY WALL	29218100.0713 SFT
AREA OF CLINICAL BLOCK	8304491.5921 SFT
PLINTH AREA OF BLOCK	5394429.9328 SFT

OPENING SCHEDULE OF DOORS AND WINDOWS					
DOORS	WIDTH	HEIGHT	WINDOWS	WIDTH	HEIGHT
D1	3'-6"	8'-3"	W1	4'-0"	5'-6"
D2	2'-6"	7'-0"	W2	5'-0"	3'-6"
D3	3'-0"	8'-3"	W3	6'-0"	5'-6"
D4	4'-0"	8'-3"	W4	3'-0"	8'-6"
D4'	4'-0"	8'-3"	W5	6'-0"	7'-6"
D5	5'-0"	8'-3"	W6	3'-0"	5'-6"
D7			W7	4'-0"	1'-6"
D8					
D9			V1	4'-0"	3'-0"

Client:



GOVERNMENT OF THE PUNJAB  
PRIMARY & SECONDARY  
HEALTHCARE DEPARTMENT

Project:

**CAD MAPPING OF TEHSIL  
HEAD QUARTER HOSPITALS,  
PUNJAB**

Consultant:



**SKAFS CONSULTANT (Pvt.) Limited**  
ENGINEERING AND ENVIRONMENT CONSULTANT

Drawing Title:

**THQ PINDI GHEB  
HOSPITAL MASTER PLAN  
PART 4**

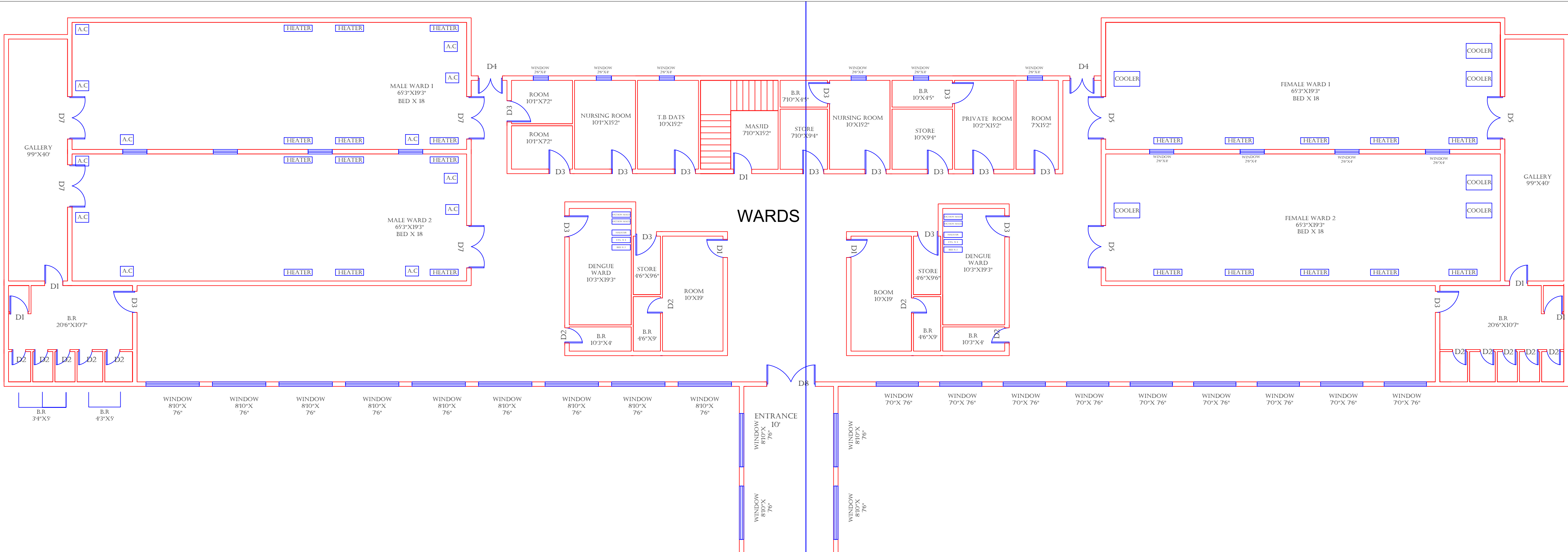
Authorized By: SKAFS	Reviewed By Co-Team Leader	Scale:
Prepared By: CAD TEAMS	Date: FEB, 2017	
Drawing No.		<b>SKAFS/PINDI GHEB /07</b>



# CLINICAL BLOCK OF THQ HOSPITAL PINDI GHEB

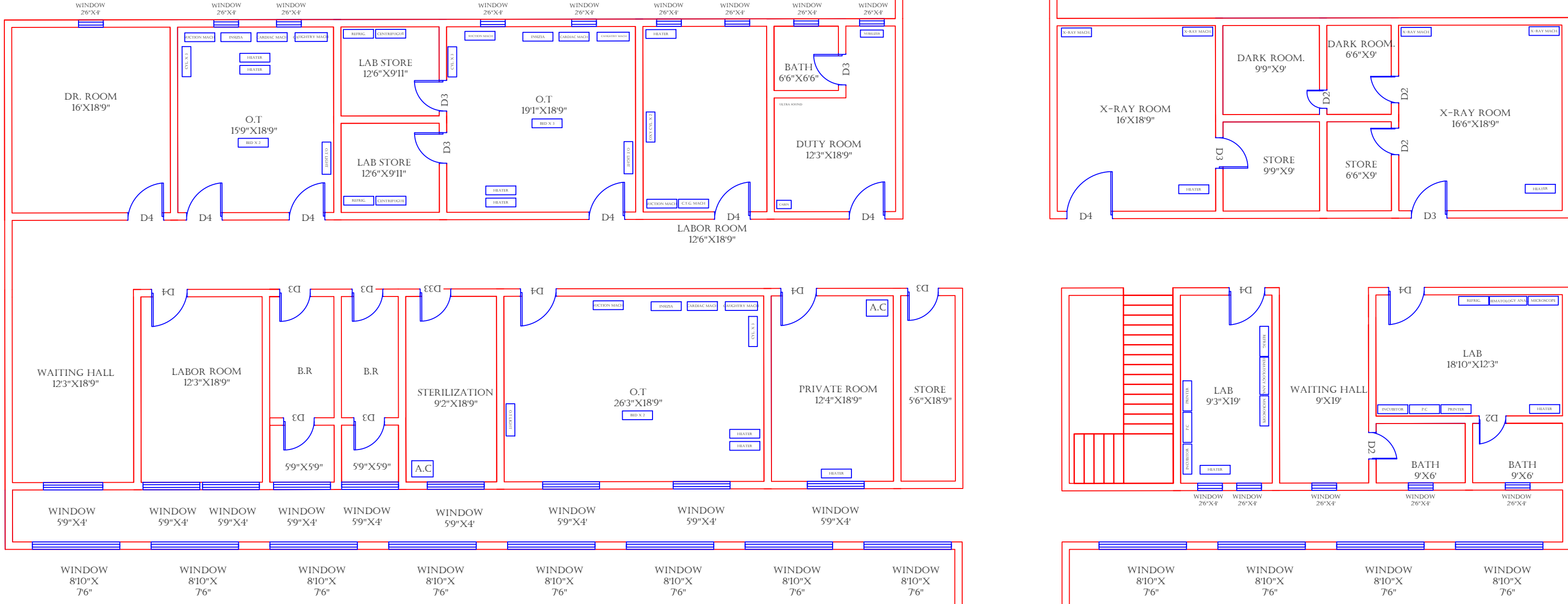
## GROUND FLOOR

### PART 1

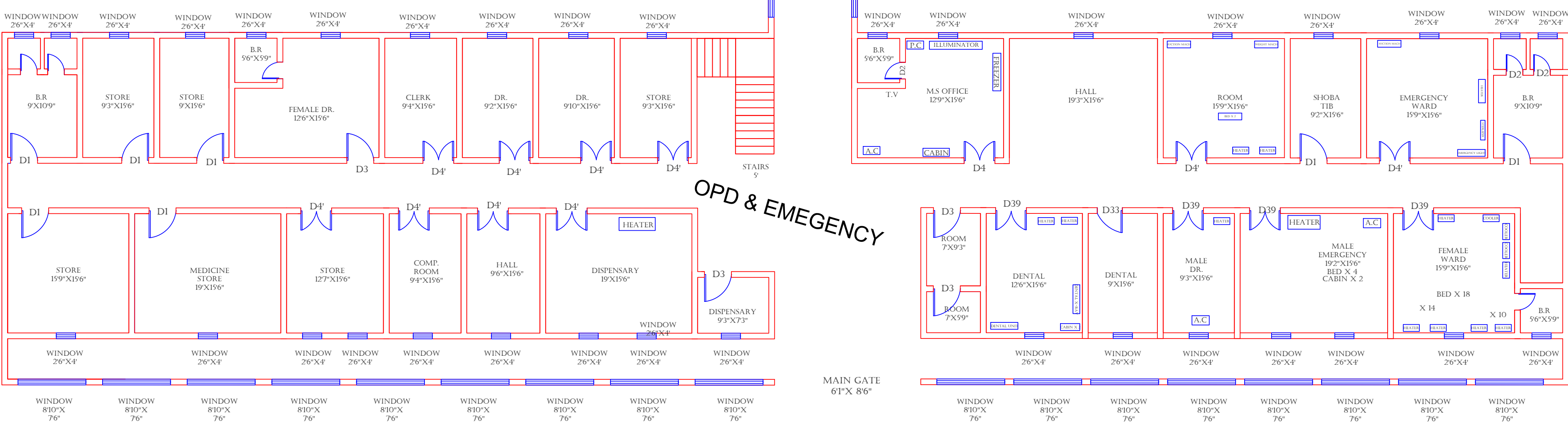


### PART 2

### PART 3



### PART 4



**Legends:**

RESIDENTIAL AREA	
ROAD	
WALL	
POWER LINE	
OHT	
TREE	
MANHOLE	
TUBE WELL	
LIGHT POLE	
LAWNS	
EARTHEN AREAS	
ASPHALT'S ROADS	
TOUGH PAVERS	
P.C.C. /PLINTH PROTECTION	
BOUNDARY WALL	
TAP	
HAND PUMP	
BRICK PAVERS	
AIR CONDITIONER	
TUBE LIGHT	
FAN	
ROOF LIGHT	
BULB	

AREA	
AREA WITHIN BOUNDARY WALL	29218100.0713 SFT
AREA OF CLINICAL BLOCK	8304491.5921 SFT
PLINTH AREA OF BLOCK	5394429.9328 SFT

OPENING SCHEDULE OF DOORS AND WINDOWS					
DOORS	WIDTH	HEIGHT	WINDOWS	WIDTH	HEIGHT
D1	3'-6"	8'-3"	W1	4'-0"	5'-6"
D2	2'-6"	7'-0"	W2	5'-0"	3'-6"
D3	3'-0"	8'-3"	W3	6'-0"	5'-6"
D4	4'-0"	8'-3"	W4	3'-0"	8'-6"
D4'	4'-0"	8'-3"	W5	6'-0"	7'-6"
D5	5'-0"	8'-3"	W6	3'-0"	5'-6"
D7			W7	4'-0"	1'-6"
D8					
D9			V1	4'-0"	3'-0"

Client:

GOVERNMENT OF THE PUNJAB  
PRIMARY & SECONDARY  
HEALTHCARE DEPARTMENT

Project:

CAD MAPPING OF TEHSIL  
HEAD QUARTER HOSPITALS,  
PUNJAB

Consultant:

SKAFS CONSULTANT (Pvt.) Limited  
ENGINEERING AND ENVIRONMENT CONSULTANT

Drawing Title:

THQ PINDI GHEB  
HOSPITAL MAIN BUILDING  
CLINICAL BLOCK PLAN

Authorized By:	Reviewed By:	Scale:
SKAFS	Co-Team Leader	1:500

Prepared By:	Date:	
CAD TEAMS	FEB, 2017	

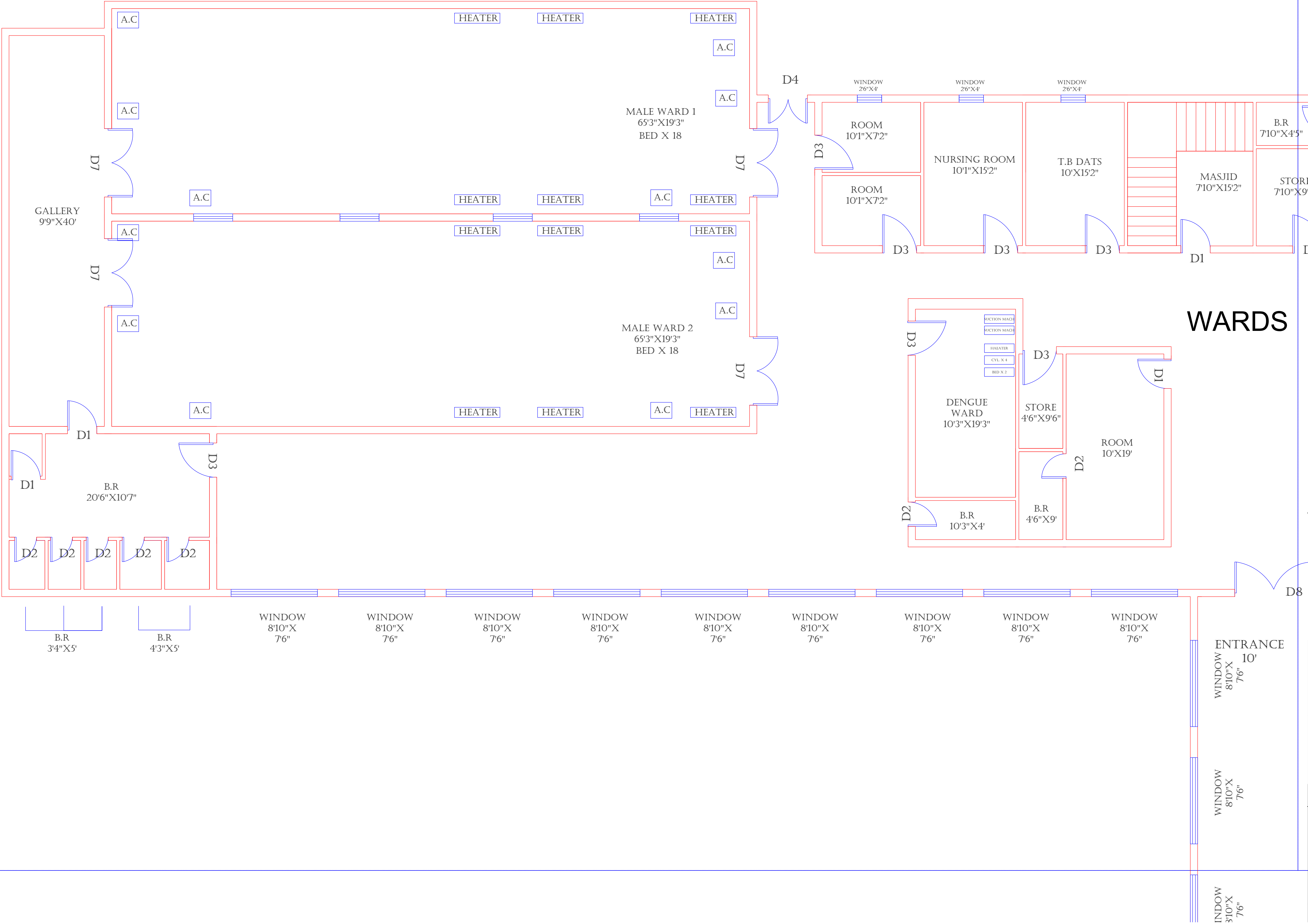
Drawing No.

SKAFS/PINDI GHEB /08



# CLINICAL BLOCK OF THQ HOSPITAL PINDI GHEB

## GROUND FLOOR (PART 1)



**Legends:**

RESIDENTIAL AREA	
ROAD	
WALL	
POWER LINE	
OHT	
TREE	
MANHOLE	
TUBE WELL	
LIGHT POLE	
LAWNS	
EARTHEN AREAS	
ASPHALTS ROADS	
TOUGH PAVERS	
P.C.C /PLINTH PROTECTION	
BOUNDARY WALL	
TAP	
HAND PUMP	
BRICK PAVERS	
AIR CONDITIONER	
TUBE LIGHT	
FAN	
ROOF LIGHT	
BULB	

AREA	
AREA WITHIN BOUNDARY WALL	29218100.0713 SFT
AREA OF CLINICAL BLOCK	8304491.5921 SFT
PLINTH AREA OF BLOCK	5394429.9328 SFT

OPENING SCHEDULE OF DOORS AND WINDOWS					
DOORS	WIDTH	HEIGHT	WINDOWS	WIDTH	HEIGHT
D1	3'-6"	8'-3"	W1	4'-0"	5'-6"
D2	2'-6"	7'-0"	W2	5'-0"	3'-6"
D3	3'-0"	8'-3"	W3	6'-0"	5'-6"
D4	4'-0"	8'-3"	W4	3'-0"	8'-6"
D4'	4'-0"	8'-3"	W5	6'-0"	7'-6"
D5	5'-0"	8'-3"	W6	3'-0"	5'-6"
D7			W7	4'-0"	1'-6"
D8					
D9			V1	4'-0"	3'-0"

Client:

**GOVERNMENT OF THE PUNJAB**  
**PRIMARY & SECONDARY**  
**HEALTHCARE DEPARTMENT**

Project:

**CAD MAPPING OF TEHSIL**  
**HEAD QUARTER HOSPITALS,**  
**PUNJAB**

Consultant:

**SKAFS CONSULTANT (Pvt.) Limited**  
ENGINEERING AND ENVIRONMENT CONSULTANT

Drawing Title:

**THQ PINDI GHEB**  
**HOSPITAL CLINICAL BLOCK**  
**PART 1**

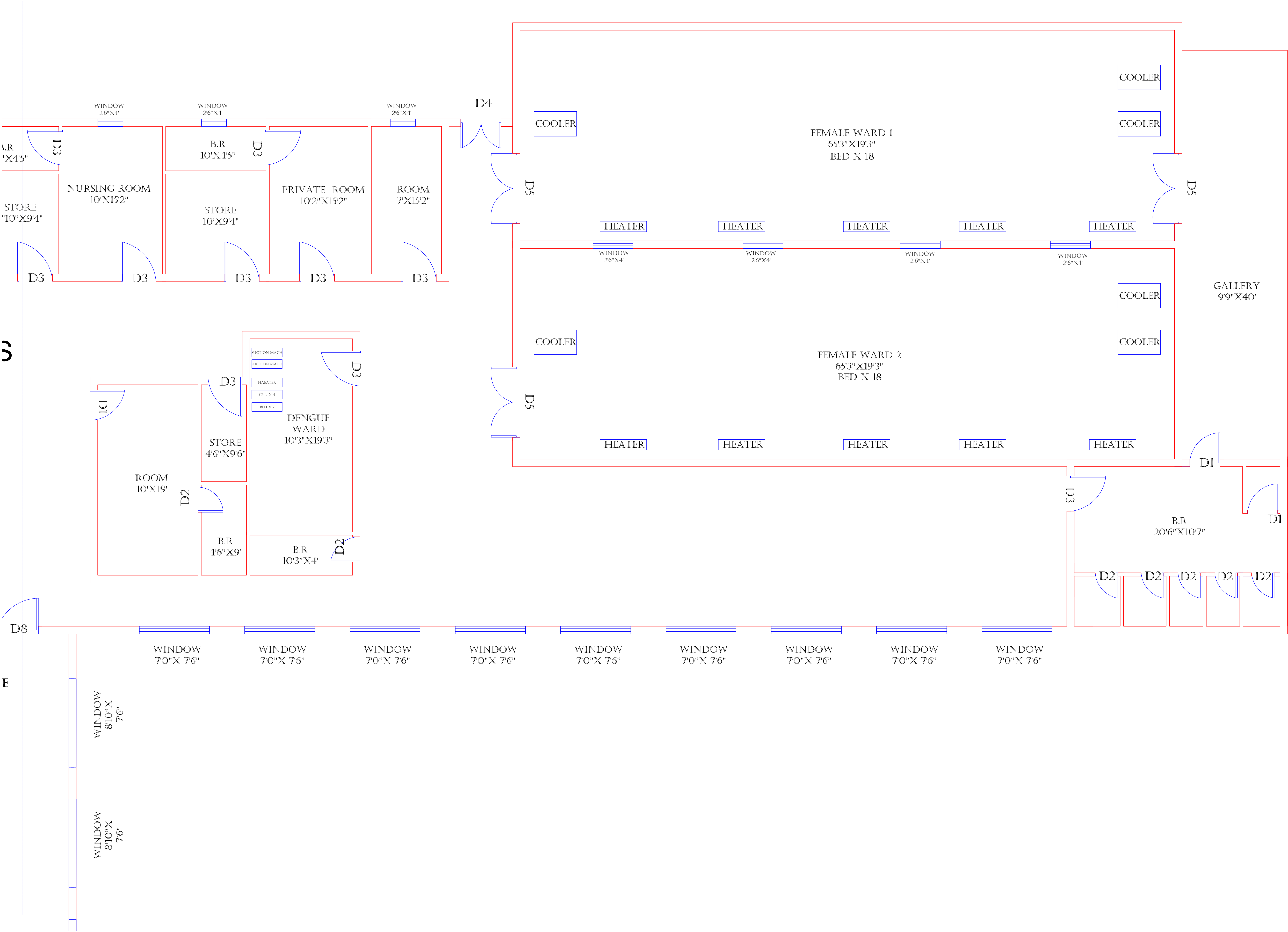
Authorized By:	Reviewed By:	Scale:
SKAFS	Co-Team Leader	
Prepared By:	Date:	
CAD TEAMS	FEB, 2017	
Drawing No.		

**SKAFS/PINDI GHEB /09**



# CLINICAL BLOCK OF THQ HOSPITAL PINDI GHEB

## GROUND FLOOR (PART 2)



**Legends:**

RESIDENTIAL AREA	
ROAD	
WALL	
POWER LINE	
OHT	
TREE	
MANHOLE	
TUBE WELL	
LIGHT POLE	
LAWNS	
EARTHEN AREAS	
ASPHALTS ROADS	
TOUGH PAVERS	
P.C.C./PLINTH PROTECTION	
BOUNDARY WALL	
TAP	
HAND PUMP	
BRICK PAVERS	
AIR CONDITIONER	
TUBE LIGHT	
FAN	
ROOF LIGHT	
BULB	

**AREA**

AREA WITHIN BOUNDARY WALL	29218100.0713 SFT
AREA OF CLINICAL BLOCK	8304491.5921 SFT
PLINTH AREA OF BLOCK	5394429.9328 SFT

**OPENING SCHEDULE OF DOORS AND WINDOWS**

DOORS	WIDTH	HEIGHT	WINDOWS	WIDTH	HEIGHT
D1	3'-6"	8'-3"	W1	4'-0"	5'-6"
D2	2'-6"	7'-0"	W2	5'-0"	3'-6"
D3	3'-0"	8'-3"	W3	6'-0"	5'-6"
D4	4'-0"	8'-3"	W4	3'-0"	8'-6"
D4'	4'-0"	8'-3"	W5	6'-0"	7'-6"
D5	5'-0"	8'-3"	W6	3'-0"	5'-6"
D7			W7	4'-0"	1'-6"
D8					
D9			V1	4'-0"	3'-0"

**Client:**

**GOVERNMENT OF THE PUNJAB  
PRIMARY & SECONDARY  
HEALTHCARE DEPARTMENT**

**Project:**

**CAD MAPPING OF TEHSIL  
HEAD QUARTER HOSPITALS,  
PUNJAB**

**Consultant:**

**SKAFS CONSULTANT (Pvt.) Limited  
ENGINEERING AND ENVIRONMENT CONSULTANT**

**Drawing Title:** **THQ PINDI GHEB  
HOSPITAL CLINICAL BLOCK  
PART 2**

Authorized By: SKAFS	Reviewed By Co-Team Leader	Scale:
Prepared By: CAD TEAMS	Date: FEB, 2017	

Drawing No. **SKAFS/PINDI GHEB /10**



# CLINICAL BLOCK OF THQ HOSPITAL PINDI GHEB

## GROUND FLOOR (PART 3)

Legends:

RESIDENTIAL AREA

ROAD

WALL

POWER LINE

OHT

TREE

MANHOLE

TUBE WELL

LIGHT POLE

LAWNS

EARTHEN AREAS

ASPHALTS ROADS

TOUGH PAVERS

P.C.C /PLINTH PROTECTION

BOUNDARY WALL

TAP

HAND PUMP

BRICK PAVERS

AIR CONDITIONER

TUBE LIGHT

FAN

ROOF LIGHT

BULB

AREA

AREA WITHIN BOUNDARY WALL

29218100.0713 SFT

AREA OF CLINICAL BLOCK

8304491.5921 SFT

PLINTH AREA OF BLOCK

5394429.9328 SFT

OPENING SCHEDULE OF DOORS AND WINDOWS

DOORS	WIDTH	HEIGHT	WINDOWS	WIDTH	HEIGHT
D1	3'-6"	8'-3"	W1	4'-0"	5'-6"
D2	2'-6"	7'-0"	W2	5'-0"	3'-6"
D3	3'-0"	8'-3"	W3	6'-0"	5'-6"
D4	4'-0"	8'-3"	W4	3'-0"	8'-6"
D4'	4'-0"	8'-3"	W5	6'-0"	7'-6"
D5	5'-0"	8'-3"	W6	3'-0"	5'-6"
D7			W7	4'-0"	1'-6"
D8					
D9			V1	4'-0"	3'-0"

Client:



GOVERNMENT OF THE PUNJAB

PRIMARY & SECONDARY

HEALTHCARE DEPARTMENT

Project:

CAD MAPPING OF TEHSIL

HEAD QUARTER HOSPITALS,

PUNJAB

Consultant:



SKAFS CONSULTANT (Pvt.) Limited

ENGINEERING AND ENVIRONMENT CONSULTANT

Drawing Title:

THQ PINDI GHEB

HOSPITAL CLINICAL BLOCK

PART 3

Authorized By:

SKAFS

Reviewed By:

Co-Team Leader

Scale:

Prepared By:

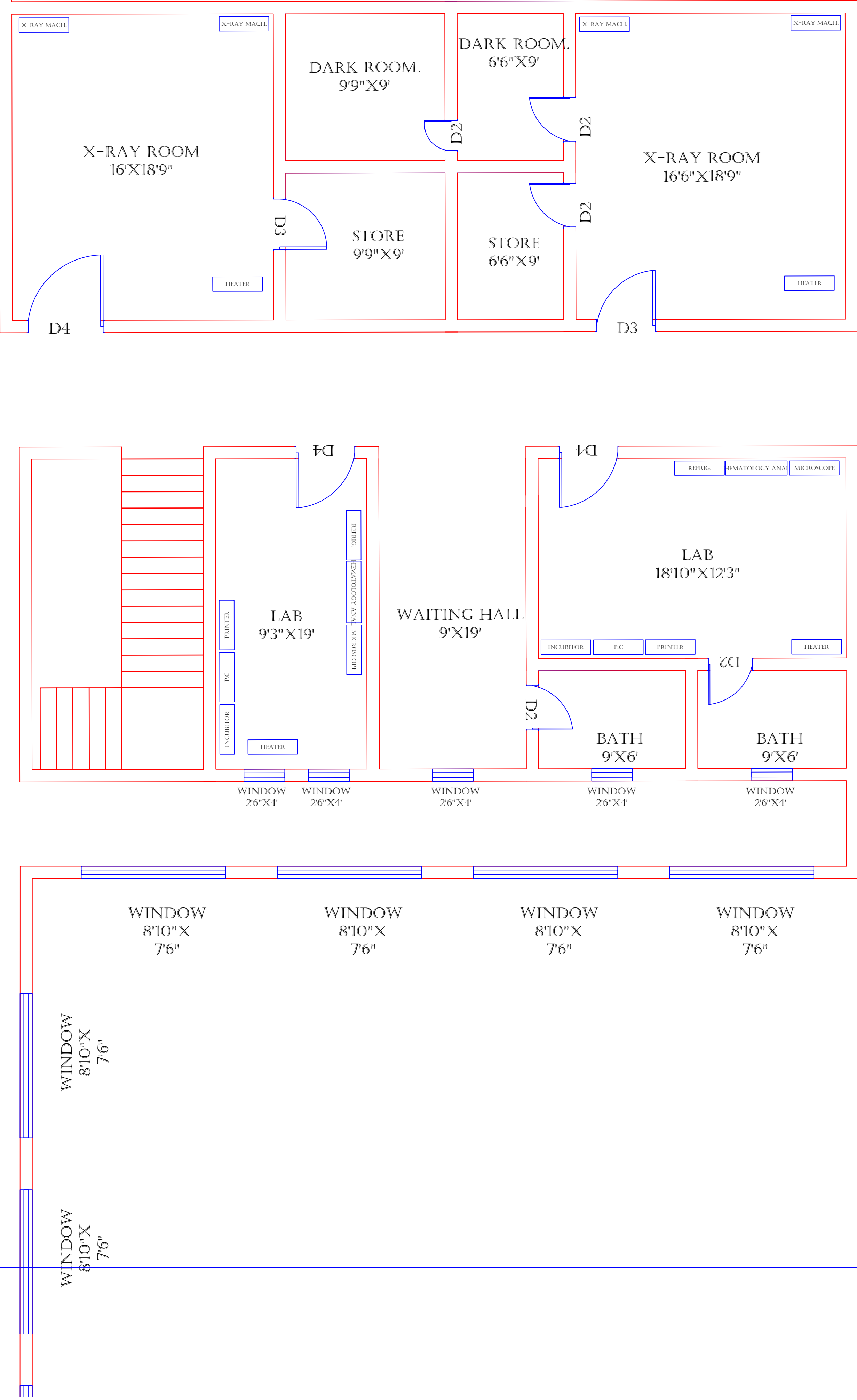
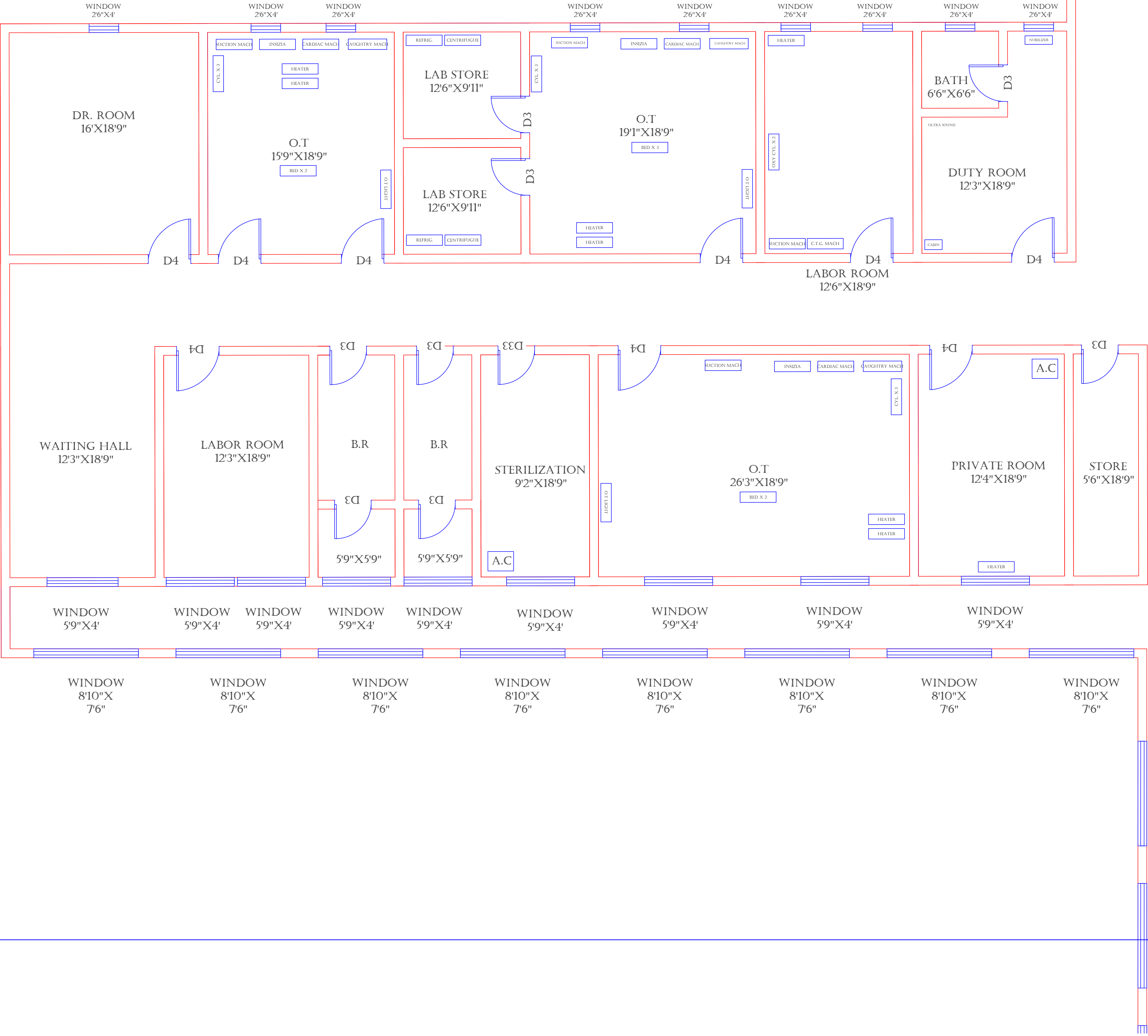
CAD TEAMS

Date:

FEB, 2017

Drawing No.

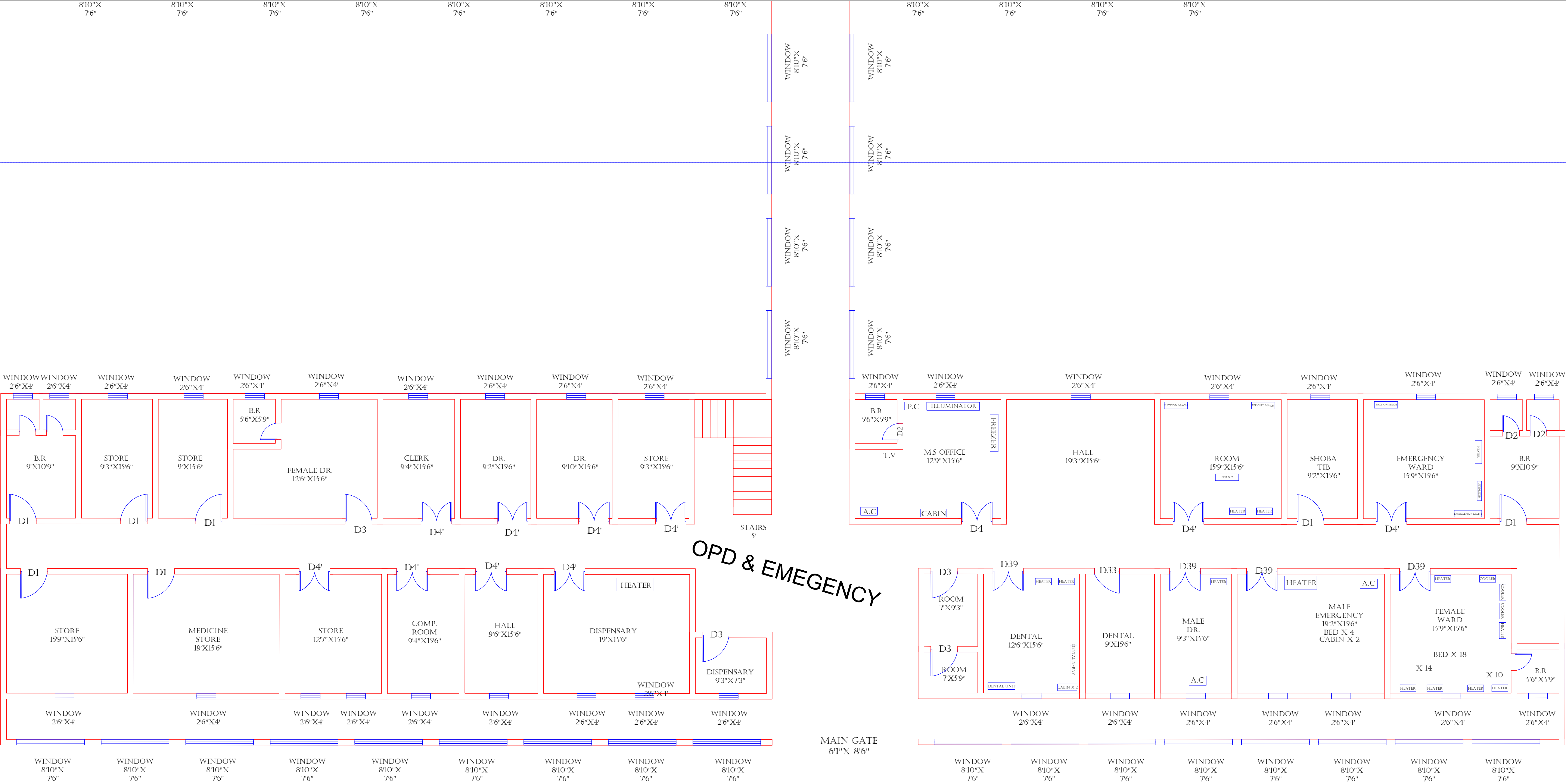
SKAFS/PINDI GHEB /11





# CLINICAL BLOCK OF THQ HOSPITAL PINDI GHEB

## GROUND FLOOR (PART 4)



**Legends:**

RESIDENTIAL AREA	
ROAD	
WALL	
POWER LINE	
OHT	
TREE	
MANHOLE	
TUBE WELL	
LIGHT POLE	
LAWNS	
EARTHEN AREAS	
ASPHALTS ROADS	
TOUGH PAVERS	
P.C.C /PLINTH PROTECTION	
BOUNDARY WALL	
TAP	
HAND PUMP	
BRICK PAVERS	
AIR CONDITIONER	
TUBE LIGHT	
FAN	
ROOF LIGHT	
BULB	

AREA	
AREA WITHIN BOUNDARY WALL	29218100.0713 SFT
AREA OF CLINICAL BLOCK	8304491.5921 SFT
PLINTH AREA OF BLOCK	5394429.9328 SFT

OPENING SCHEDULE OF DOORS AND WINDOWS					
DOORS	WIDTH	HEIGHT	WINDOWS	WIDTH	HEIGHT
D1	3'-6"	8'-3"	W1	4'-0"	5'-6"
D2	2'-6"	7'-0"	W2	5'-0"	3'-6"
D3	3'-0"	8'-3"	W3	6'-0"	5'-6"
D4	4'-0"	8'-3"	W4	3'-0"	8'-6"
D4'	4'-0"	8'-3"	W5	6'-0"	7'-6"
D5	5'-0"	8'-3"	W6	3'-0"	5'-6"
D7			W7	4'-0"	1'-6"
D8					
D9			V1	4'-0"	3'-0"

Client:



**GOVERNMENT OF THE PUNJAB**  
**PRIMARY & SECONDARY**  
**HEALTHCARE DEPARTMENT**

Project:

**CAD MAPPING OF TEHSIL**  
**HEAD QUARTER HOSPITALS,**  
**PUNJAB**

Consultant:



**SKAFS CONSULTANT (Pvt.) Limited**  
ENGINEERING AND ENVIRONMENT CONSULTANT

Drawing Title:

**THQ PINDI GHEB**  
**HOSPITAL CLINICAL BLOCK**  
**PART 4**

Authorized By: SKAFS	Reviewed By Co-Team Leader	Scale:
Prepared By: CAD TEAMS	Date: FEB, 2017	
Drawing No. <b>SKAFS/PINDI GHEB /12</b>		



# CLINICAL BLOCK OF THQ HOSPITAL PINDI GHEB

## FIRST FLOOR



**Legends:**

RESIDENTIAL AREA	
ROAD	
WALL	
POWER LINE	
OHT	
TREE	
MANHOLE	
TUBE WELL	
LIGHT POLE	
LAWNS	
EARTHEN AREAS	
ASPHALTS ROADS	
TOUGH PAVERS	
P.C.C /PLINTH PROTECTION	
BOUNDARY WALL	
TAP	
HAND PUMP	
BRICK PAVERS	
AIR CONDITIONER	
TUBE LIGHT	
FAN	
ROOF LIGHT	
BULB	

AREA	
AREA WITHIN BOUNDARY WALL	29218100.0713 SFT
AREA OF CLINICAL BLOCK	8304491.5921 SFT
PLINTH AREA OF BLOCK	5394429.9328 SFT

OPENING SCHEDULE OF DOORS AND WINDOWS					
DOORS	WIDTH	HEIGHT	WINDOWS	WIDTH	HEIGHT
D1	3'-6"	8'-3"	W1	4'-0"	5'-6"
D2	2'-6"	7'-0"	W2	5'-0"	3'-6"
D3	3'-0"	8'-3"	W3	6'-0"	5'-6"
D4	4'-0"	8'-3"	W4	3'-0"	8'-6"
D4'	4'-0"	8'-3"	W5	6'-0"	7'-6"
D5	5'-0"	8'-3"	W6	3'-0"	5'-6"
D7			W7	4'-0"	1'-6"
D8					
D9			V1	4'-0"	3'-0"

Client:



**GOVERNMENT OF THE PUNJAB**  
**PRIMARY & SECONDARY**  
**HEALTHCARE DEPARTMENT**

Project:

**CAD MAPPING OF TEHSIL**  
**HEAD QUARTER HOSPITALS,**  
**PUNJAB**

Consultant:



**SKAFS CONSULTANT (Pvt.) Limited**  
ENGINEERING AND ENVIRONMENT CONSULTANT

Drawing Title:

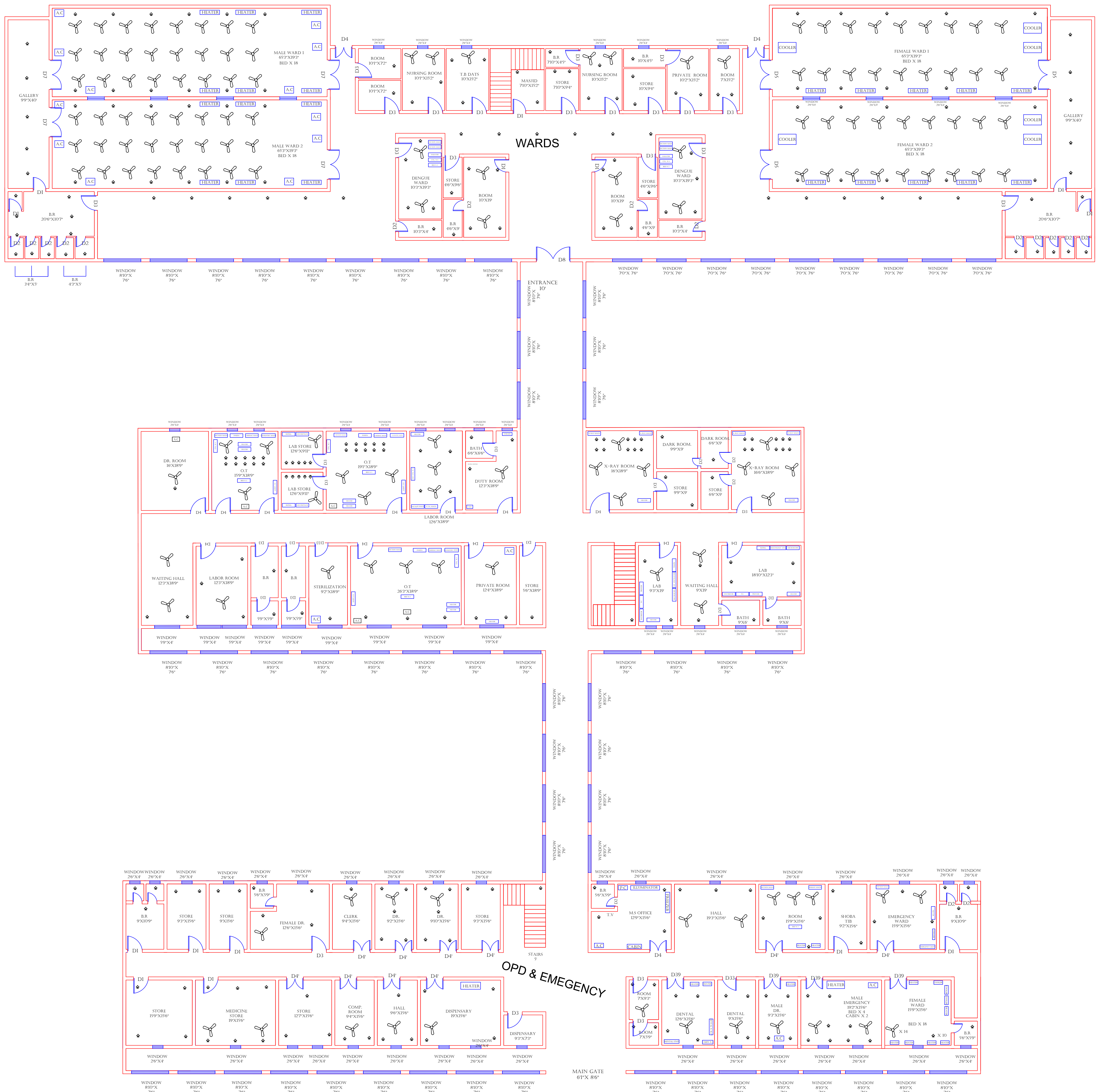
**THQ PINDI GHEB**  
**HOSPITAL CLINICAL BLOCK**  
**FIRST FLOOR**

Authorized By: SKAFS	Reviewed By Co-Team Leader	Scale:
Prepared By: CAD TEAMS	Date: FEB, 2017	
Drawing No. <b>SKAFS/PINDI GHEB /13</b>		



# ELECTRICAL LAYOUT PLAN OF THQ HOSPITAL PINDI GHEB

## GROUND FLOOR



**Legends:**

RESIDENTIAL AREA	
ROAD	
WALL	
POWER LINE	
OHT	
TREE	
MANHOLE	
TUBE WELL	
LIGHT POLE	
LAWNS	
EARTHEN AREAS	
ASPHALTS ROADS	
TOUGH PAVERS	
P.C.C /PLINTH PROTECTION	
BOUNDARY WALL	
TAP	
HAND PUMP	
BRICK PAVERS	
AIR CONDITIONER	
TUBE LIGHT	
FAN	
ROOF LIGHT	
BULB	

AREA	
AREA WITHIN BOUNDARY WALL	29218100.0713 SFT
AREA OF CLINICAL BLOCK	8304491.5921 SFT
PLINTH AREA OF BLOCK	5394429.9328 SFT

OPENING SCHEDULE OF DOORS AND WINDOWS					
DOORS	WIDTH	HEIGHT	WINDOWS	WIDTH	HEIGHT
D1	3'-6"	8'-3"	W1	4'-0"	5'-6"
D2	2'-6"	7'-0"	W2	5'-0"	3'-6"
D3	3'-0"	8'-3"	W3	6'-0"	5'-6"
D4	4'-0"	8'-3"	W4	3'-0"	8'-6"
D4'	4'-0"	8'-3"	W5	6'-0"	7'-6"
D5	5'-0"	8'-3"	W6	3'-0"	5'-6"
D7			W7	4'-0"	1'-6"
D8					
D9			V1	4'-0"	3'-0"

Client:

**GOVERNMENT OF THE PUNJAB**  
**PRIMARY & SECONDARY**  
**HEALTHCARE DEPARTMENT**

Project:

**CAD MAPPING OF TEHSIL**  
**HEAD QUARTER HOSPITALS,**  
**PUNJAB**

Consultant:

**SKAFS CONSULTANT (Pvt.) Limited**  
ENGINEERING AND ENVIRONMENT CONSULTANT

Drawing Title:

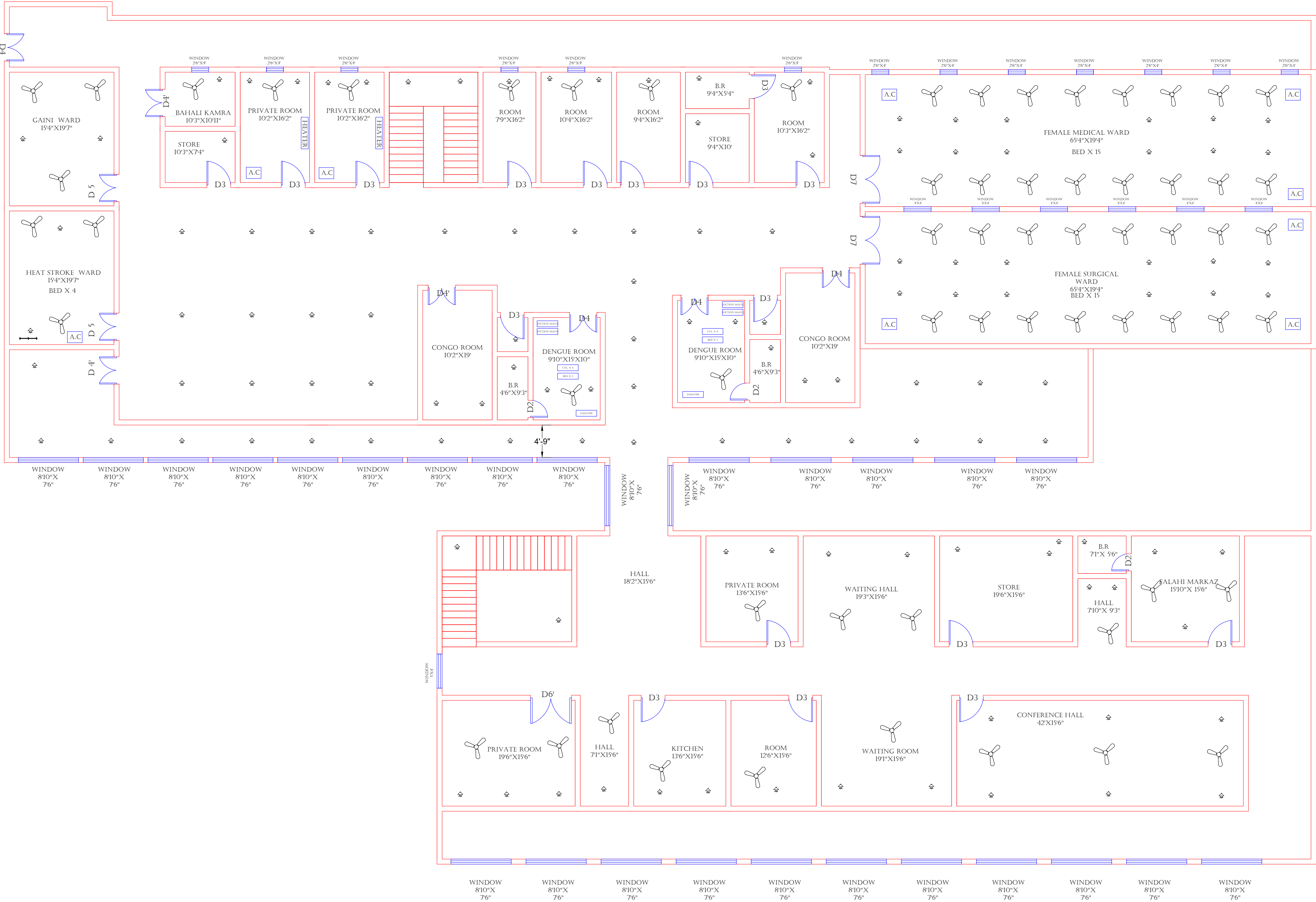
**THQ PINDI GHEB**  
**ELECTRICAL LAYOUT**  
**GROUND FLOOR**

Authorized By: SKAFS	Reviewed By Co-Team Leader	Scale:
Prepared By: CAD TEAMS	Date: FEB, 2017	
Drawing No. <b>SKAFS/PINDI GHEB /14</b>		



# ELECTRICAL LAYOUT PLAN OF THQ HOSPITAL PINDI GHEB

## FIRST FLOOR



**Legends:**

RESIDENTIAL AREA	
ROAD	
WALL	
POWER LINE	
OHT	
TREE	
MANHOLE	
TUBE WELL	
LIGHT POLE	
LAWNS	
EARTHEN AREAS	
ASPHALTS ROADS	
TOUGH PAVERS	
P.C.C /PLINTH PROTECTION	
BOUNDARY WALL	
TAP	
HAND PUMP	
BRICK PAVERS	
AIR CONDITIONER	
TUBE LIGHT	
FAN	
ROOF LIGHT	
BULB	

AREA		29218100.0713 SFT
AREA WITHIN BOUNDARY WALL		
AREA OF CLINICAL BLOCK		8304491.5921 SFT
PLINTH AREA OF BLOCK		5394429.9328 SFT

OPENING SCHEDULE OF DOORS AND WINDOWS					
DOORS	WIDTH	HEIGHT	WINDOWS	WIDTH	HEIGHT
D1	3'-6"	8'-3"	W1	4'-0"	5'-6"
D2	2'-6"	7'-0"	W2	5'-0"	3'-6"
D3	3'-0"	8'-3"	W3	6'-0"	5'-6"
D4	4'-0"	8'-3"	W4	3'-0"	8'-6"
D4'	4'-0"	8'-3"	W5	6'-0"	7'-6"
D5	5'-0"	8'-3"	W6	3'-0"	5'-6"
D7			W7	4'-0"	1'-6"
D8					
D9			V1	4'-0"	3'-0"

Client:

**GOVERNMENT OF THE PUNJAB**  
**PRIMARY & SECONDARY**  
**HEALTHCARE DEPARTMENT**

Project:

**CAD MAPPING OF TEHSIL**  
**HEAD QUARTER HOSPITALS,**  
**PUNJAB**

Consultant:

**SKAFS CONSULTANT (Pvt.) Limited**  
ENGINEERING AND ENVIRONMENT CONSULTANT

Drawing Title:

**THQ PINDI GHEB**  
**ELECTRICAL LAYOUT**  
**FIRST FLOOR**

Authorized By: SKAFS	Reviewed By Co-Team Leader	Scale:
Prepared By: CAD TEAMS	Date: FEB, 2017	
Drawing No.		

**SKAFS/PINDI GHEB /15**