

FACILITIES BEING ESTABLISHED

- CT SCAN (Trauma Center)
- UPGRADEATION OF EMERGENCY
- ICU
- CCU
- DIALYSIS
- PHYSIOTHERAPY
- BURN UNIT
- DENTAL UNIT
- LAUNDRY
- MORTUARY
- YELLOW ROOM
- WATER FILTRATION PLANT
- CANTEEN

SERVICES TO BE OUTSOURCE

- MEP
- JANITORIAL
- PARKING & SECURITY
- CAFETERIA
- AC's & GENERATORS
- LAUNDRY
- CT SCAN
- PATHOLOGY LABS
- HORTICULTURE

THEMATIC AREAS OF MSDS

- 2.1 ACCESS, ASSESSMENT, AND C.ONTINUITY OF CARE (AAC)
- CARE OF PATIENTS (COP)
- MANAGEMENT OF MEDICATION (MOM)
- PATIENT RIGHTS AND EDUCATION (PRE)
- HOSPITAL INFECTION CONTROL (HIC)
- CONTINUOUS QUALITY IMPROVEMENT (CQI)
- RESPONSIBILITIES OF MANAGEMENT (ROM)
- FACILITY MANAGEMENT AND SAFETY (FMS)
- HUMAN RESOURCE MANAGEMENT (HRM)
- INFORMATION MANAGEMENT SYSTEM (IMS)

IT INTERVENTIONS

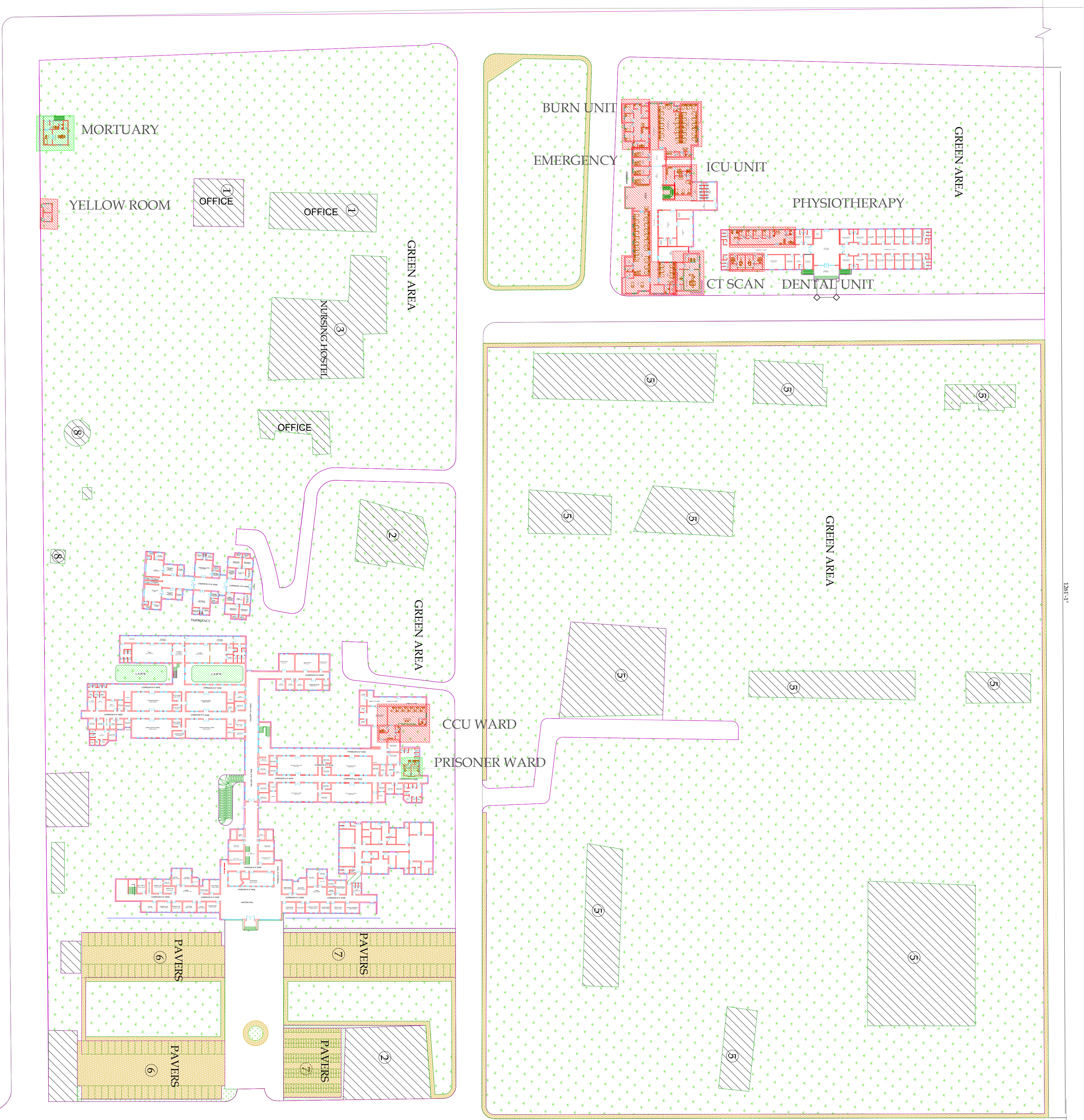
- QUEUE MANAGEMENT SYSTEM
- ELECTRONIC MEDICAL RECORD

NEW MANAGEMENT STRUCTURE

- NMS
- CONSULTANTS
- NURSES
- WMO's
- EMO's
- AHP
- PHARMACISTS
- PHYSIOTHERAPISTS

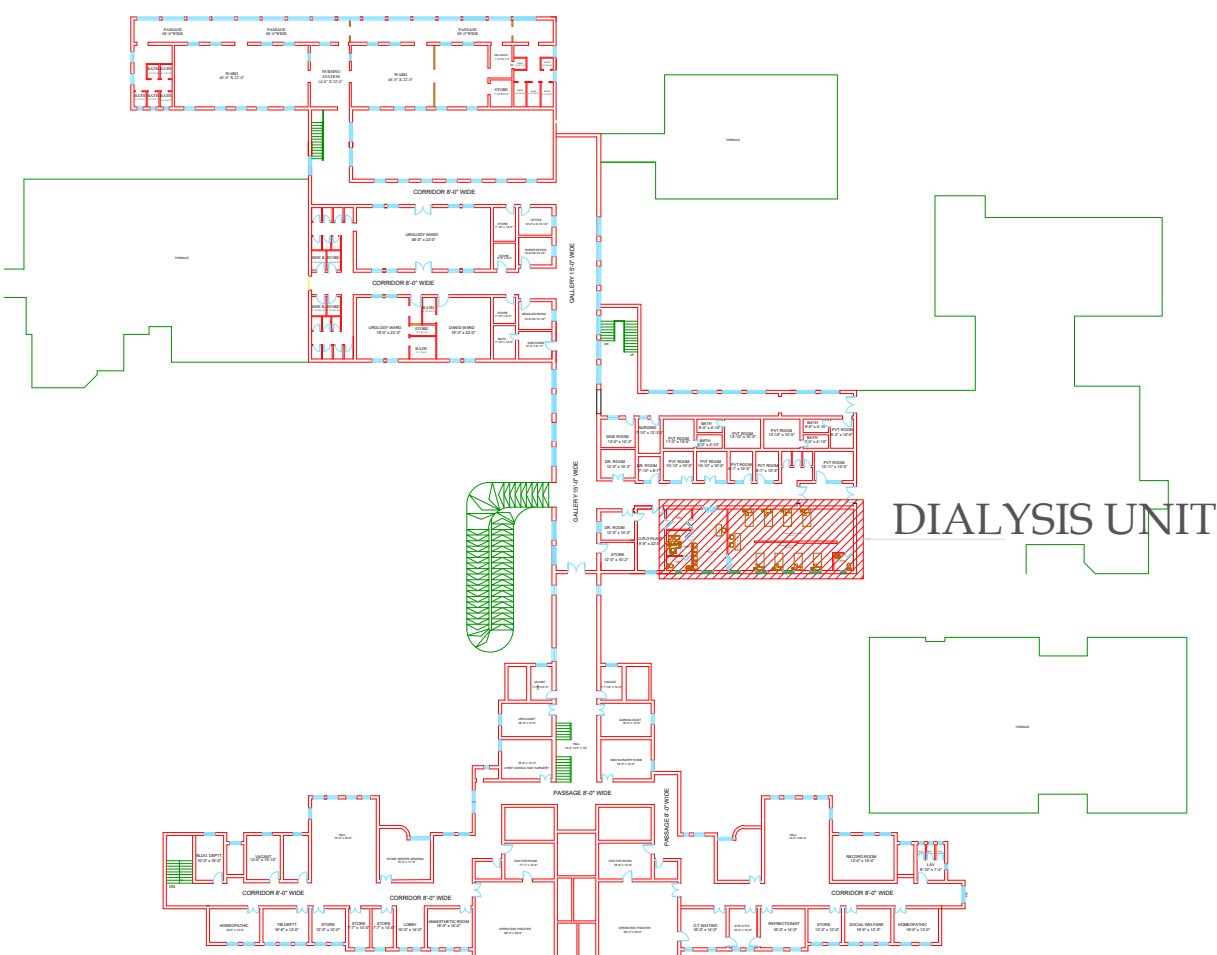
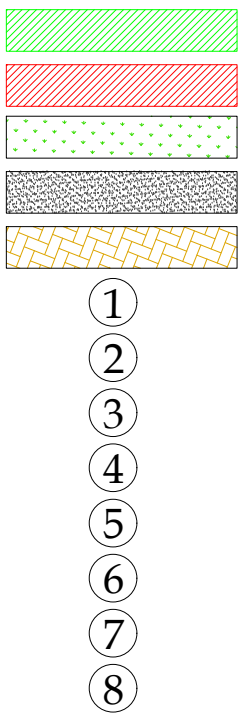


BY:
PROJECT MANAGEMENT UNIT
PRIMARY & SECONDARY
HEALTHCARE DEPARTMENT
GOVT. OF PUNJAB



LEGEND:

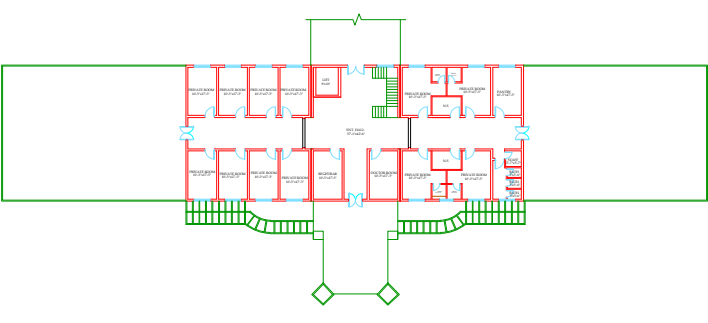
- PROPOSED ELEVATION
- EXISTING BLOCKS
- PROPOSED BLOCKS
- GREEN AREA
- ASPHALT
- PAVERS
- OFFICES/ADMINISTRATION
- RELIGIOUS BUILDING
- HOSTEL
- NURSING SCHOOL
- RESIDENTIAL
- EXISTING PARKING
- PROPOSED PARKING
- TUBEWELL



FIRST FLOOR PLAN MAIN BUILDING



FIRST FLOOR PLAN ON EMERGENCY



FIRST FLOOR PLAN OF OPD

MACHINERY & EQUIPMENTS

Emergency Equipment	
Area	ITEM DESCRIPTION
Reception Area	Table Chairs Computer Data Entry With Printer
Triage area	Table (20 X 40 CM) Chairs (10) B & P apparatus wall type (10) Gurney (WITH FOOT STEP) (10) Mercury & P apparatus (10) Laryngoscope (piece Adult) mask (10) Oxygenator (10) ECG Machine (with trolley) (10) Central oxygen with accessories FDR wash
Minor O.T	NEULABER HD (10) SUCKER MACHINE (10) CRASH TROLLEY EQUIP (10) INSTRUMENT CABINET (10) MEDICINE TROLLEY (10) O 2 Table (WITH foot step) Center Oxygen supply Sucker machine Portable O 2 Lights Cooling o 2 light No air oven Autoclave Instrument trolley (10) Instrument cabinet GUMME (10) Sucker machine (10) Neulaber HD (10) Center Oxygen supply (10) Resuscitation Trolley (10) equipped (10) Defibrillator (10) Pulse monitor (10) Bedside monitor (10) ECG MACHINE (10) BP APPARATUS (10) ECG STEP (10) ATTENDANT RESCH (10) (MOTORIZED BEDS) with accessories (with foot step) (10) ECG machine (with trolley) (10) Pulse monitor (10) Bedside monitor (10) Neulaber HD (10) Sucker machine (10) Wheel chair (10) Stretcher (10) ambulance pads with Mask (10) ambulance bag adult with Mask (10) patient bed (10) Portable x-rays (200 M.A) Portable ultra sound Shoe Cover Machine Vain Finder Acoustic Display Board
Emergency ward	ECG Machine (10) Bedside monitor (10) ECG machine (with trolley) (10) Pulse monitor (10) Sucker machine (10) Neulaber HD (10) Center Oxygen supply (10) Resuscitation Trolley (10) equipped (10) Defibrillator (10) Pulse monitor (10) Bedside monitor (10) ECG MACHINE (10) BP APPARATUS (10) ECG STEP (10) ATTENDANT RESCH (10) (MOTORIZED BEDS) with accessories (with foot step) (10) ECG machine (with trolley) (10) Pulse monitor (10) Bedside monitor (10) Neulaber HD (10) Sucker machine (10) Wheel chair (10) Stretcher (10) ambulance pads with Mask (10) ambulance bag adult with Mask (10) patient bed (10) Portable x-rays (200 M.A) Portable ultra sound Shoe Cover Machine Vain Finder Acoustic Display Board
Generalized	ECG Machine (10) Bedside monitor (10) ECG machine (with trolley) (10) Pulse monitor (10) Sucker machine (10) Neulaber HD (10) Center Oxygen supply (10) Resuscitation Trolley (10) equipped (10) Defibrillator (10) Pulse monitor (10) Bedside monitor (10) ECG MACHINE (10) BP APPARATUS (10) ECG STEP (10) ATTENDANT RESCH (10) (MOTORIZED BEDS) with accessories (with foot step) (10) ECG machine (with trolley) (10) Pulse monitor (10) Bedside monitor (10) Neulaber HD (10) Sucker machine (10) Wheel chair (10) Stretcher (10) ambulance pads with Mask (10) ambulance bag adult with Mask (10) patient bed (10) Portable x-rays (200 M.A) Portable ultra sound Shoe Cover Machine Vain Finder Acoustic Display Board
Others	ECG Machine (10) Bedside monitor (10) ECG machine (with trolley) (10) Pulse monitor (10) Sucker machine (10) Neulaber HD (10) Center Oxygen supply (10) Resuscitation Trolley (10) equipped (10) Defibrillator (10) Pulse monitor (10) Bedside monitor (10) ECG MACHINE (10) BP APPARATUS (10) ECG STEP (10) ATTENDANT RESCH (10) (MOTORIZED BEDS) with accessories (with foot step) (10) ECG machine (with trolley) (10) Pulse monitor (10) Bedside monitor (10) Neulaber HD (10) Sucker machine (10) Wheel chair (10) Stretcher (10) ambulance pads with Mask (10) ambulance bag adult with Mask (10) patient bed (10) Portable x-rays (200 M.A) Portable ultra sound Shoe Cover Machine Vain Finder Acoustic Display Board
Medical Equipment	
Area	Name of Equipment
Laboratory	Semi Auto Clinical Chemistry Analyzer Hematology Analyzer Electrolyte Analyzer Blood Gas Analyzer Microscope Water Bath Hot Air Oven Dried water plant Auto pipettes glass vials Centrifuge Machine Slide X-ray Machine Mobile X-Ray Machine Computerized Radiography System Chest X-Ray Lead apron and FPE Dental radiology (Add) Lead glass shield Lead Vials
X-Rays	Portable Mobile Ultrasound Color Doppler RADIOLOGY Cardiac Monitor Temporary pace maker Defibrillator ECG Machine Three Channel ETT Machine Color Doppler RADIOLOGY Suction Pump Blood Culture Centrifuge Machine Slide viewer Clinical Microscope Computerized Hemo Diapies Machine
Ultrasound	Baby Cot Phototherapy Unit Infant Warmer Pulse Oximeter Infant Incubator Hospital Grade Nebulizer Heavy Duty
CCU	Anesthesia Machine with Ventilator BED SIDE PATIENT MONITOR ECG Monitor Defibrillator Electrocardiogram Unit Operation Table Ceiling Operating Light STEAM STERILIZER Resuscitation trolley With Crash Cart
Blood Bank	mayo table MOBILE OPERATING LIGHT Operation Table ORTHOPEDIC DRILL Fluoride Ceiling Fluoroscope Pneumatic Tomopants Orthopedic Instruments Portable Mobile Ultrasound Autoclave Delivery Set Delivery Table ECG Monitor D & C Set Vacuum Extractor CTG Machine ECG Machine Three Channel Delivery table Light Baby Cot Delivery trolley Desktop Fetal Heart Rate Detector
Dialysis Unit (10 beds)	Steam Sterilizer Operation Table MOBILE OPERATING LIGHT Suction Pump Laryngoscope Set of Surgical Instruments
Nursery	Stretcher Wheel chair foot support Resuscitation trolley With Crash Cart Resuscitation trolley With Crash Cart BP Apparatus Ventilator CPAP X-RAY PROCESSOR Baby cot Incubator Incubator Central Medical Gas Pipe Line System Refrigerator glass single Door Distillery Machine CCTV Camera top dome Washing Machine CCTV Camera Stove DVR for CCTV Camers Sound System for announcements Fire extinguishers LED TV's
G.T (B4)	
Orthopedic	
Others	
Gynae (20 beds)	
Surgical Emergency (10 beds)	
Machinery and Equipment (General)	
Area	Name of Equipment
Others	Refrigerator (Domestic) front glass double door Refrigerator glass single door Air Curtain On Door Washing machines for parties Gas burner for parties Fire Extinguishers (10) LED TV 4 Tons air conditioners (Cabinet) 2 Tons air conditioners (Cabinet) 2 Tons air conditioners (split) Ceiling Fans 50" Brickwork Fans 10" Industrial Exhaust Refrigerators 10 CFT D-wall Connection of Electricity / Express Line etc. Electrical Distribution Boxes Protection cabin for electricity distribution boxes Bed Sheets and pillow covers Blankets Blankets with covers Stoves for parties CCTV Camers CCTV Camera top dome Fire extinguishers DVR